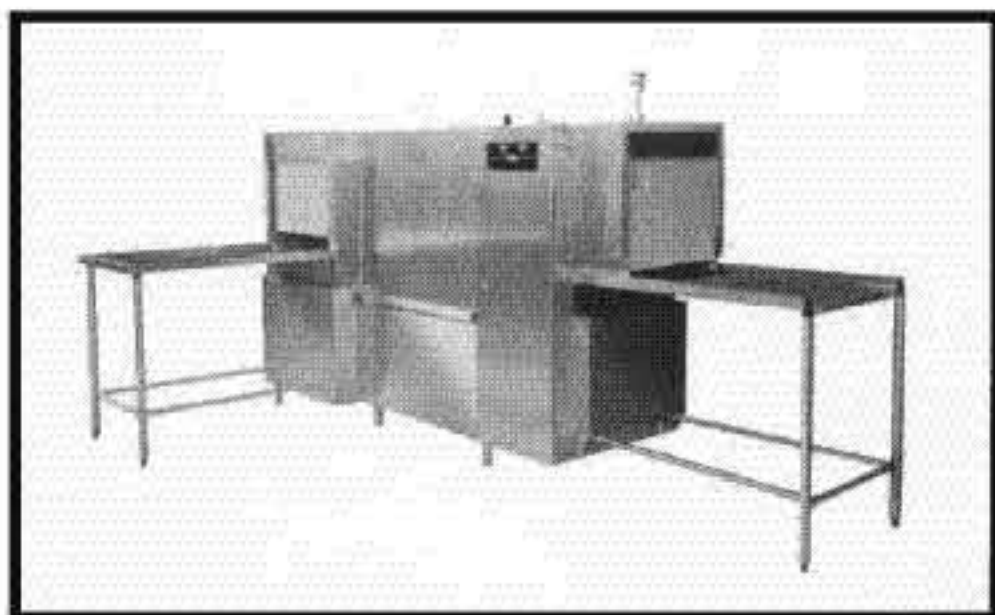
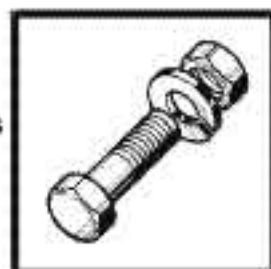


HOBART



CX-CA / CX-CB

Spare parts
Pièces Détachées
Ersatzteile
Onderdelen





Electrical components listed in this catalogue are rated for the following supply voltages:

Les composants électriques énumérés dans ce catalogue sont prévus pour les tensions suivantes:

Die in diesem Katalog aufgeführten Elektroteile beziehen sich auf folgende Anschlußspannungen:

200V / 50Hz / 3

200V / 60Hz / 3

380V / 50Hz / 3

230V / 50Hz / 3

400V / 50Hz / 3 / N

415V / 50Hz / 3 / N

For other voltages, refer to the wiring diagram shipped with the machine.

Pour d'autres tensions, se référer au schéma électrique envoyé avec la machine.

Bei nicht aufgeführten Anschlußspannungen bitte den, der Maschine beigelegten, Schaltplan beachten.

R/L = Direction right / left
Direction droite / gauche
Laufrichtung rechts / links
Looprichting rechts / links

L/R = Direction left / right
Direction gauche / droite
Laufrichtung links / rechts
Looprichting links / rechts



Contents

Side panels & auto timer	4
Module prewash unit 700 mm	5
Prewash - drive unit.....	6
Module 900 mm.....	7
Pump (700 mm module)	8
Pump (900 mm module)	9
Wash systems prewash unit & wash unit	10
Side wash system.....	11
Drain prewash unit & wash unit.....	12
Tank heating & floatswitch.....	13
Tank heating - hot water / steam.....	14
Rinse section	15
Rinse system	16
Dual rinse pump	17
Pipework-2 fill:	
France and Export.....	18
UK and Germany.....	19
Pipework-1 fill:	
UK and Germany.....	20
France and Export.....	21
By-pass C6 (condenser).....	22
Electrical rinse booster heater	23
Rinse booster heater - hot water / steam	24-25
Vent hood	26
Exhaust extraction - fan.....	27
Condenser - housing	28
Condensers C5 / C6.....	29
Drive unit	30
Conveyor & tracks	31
Drier section	32
Blower electric D5.....	33
Blower steam & hot water D5.....	34
Position of curtains	35

Inhalt

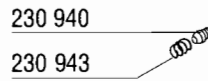
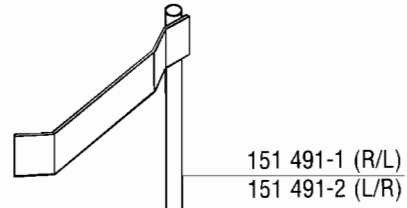
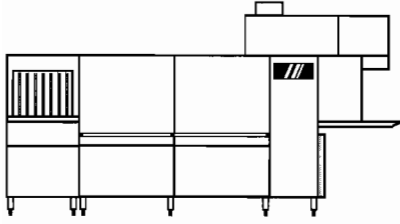
Seitenverkleidung & Autotimer	4
Segment Vorwaschung 700 mm	5
Vorwaschung Antriebseinheit.....	6
Segment 900 mm	7
Waschpumpe (700 mm Segment).....	8
Waschpumpe (900 mm Segment).....	9
Waschsysteme Vorwaschung & Waschung.....	10
Seitliche Waschung.....	11
Ablauf Vorwaschung & Waschung	12
Tankheizung - Schwimmer-Schalter.....	13
Tankheizung - Heißwasser / Dampf	14
Klarspülzone.....	15
Spülsystem	16
Duo- Spülpumpe.....	17
Leitungen-2 Füllung:	
Frankreich und Export.....	18
UK und Deutschland.....	19
Leitungen-1 Füllung:	
UK und Deutschland.....	20
Frankreich und Export	21
By-Pass C6 (Kondensator).....	22
Elektrischer Durchlauferhitzer	23
Durchlauferhitzer - Heißwasser / Dampf	24-25
Absaughaube	26
Wrasenabzug - Ventilator	27
Kondensator - Gehäuse	28
Kondensatoren C5 / C6.....	29
Antrieb	30
Schwingrahmen & Laufschiene	31
Trockenzone.....	32
Trocknungsgebläse elektrisch D5	33
Trocknungsgebläse Dampf & Heißwasser D5.....	34
Vorhanganordnung.....	35

Sommaire

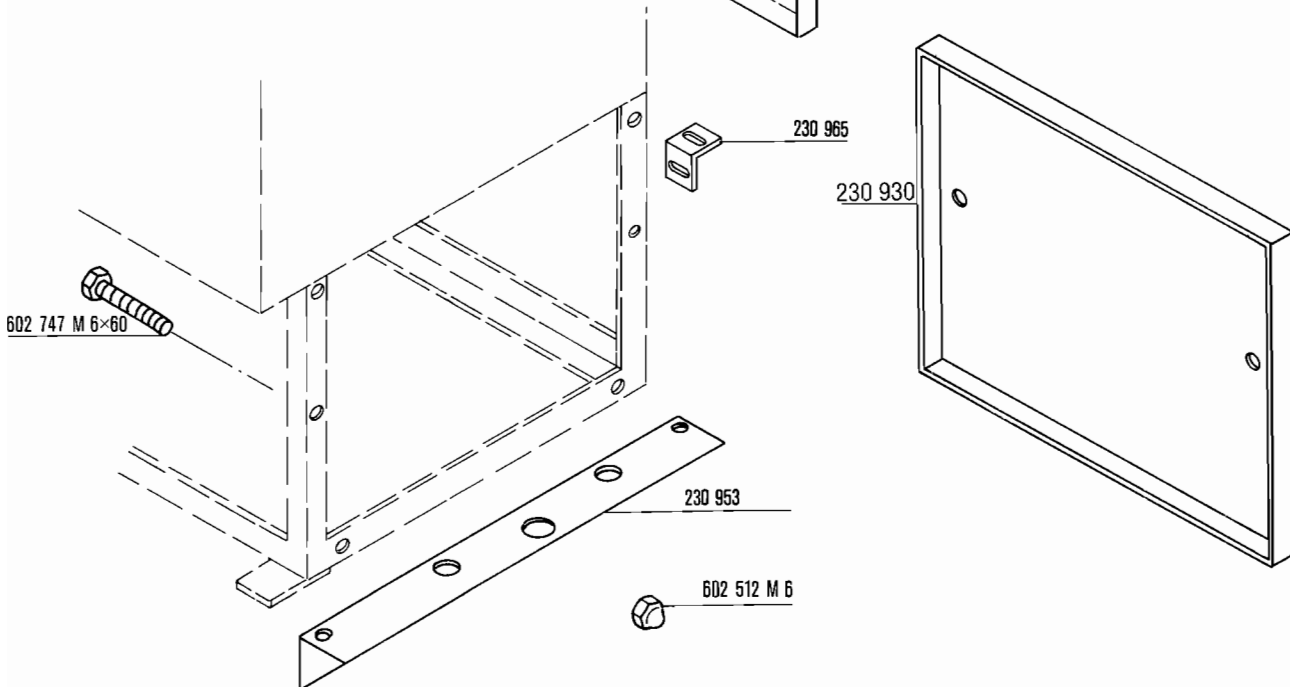
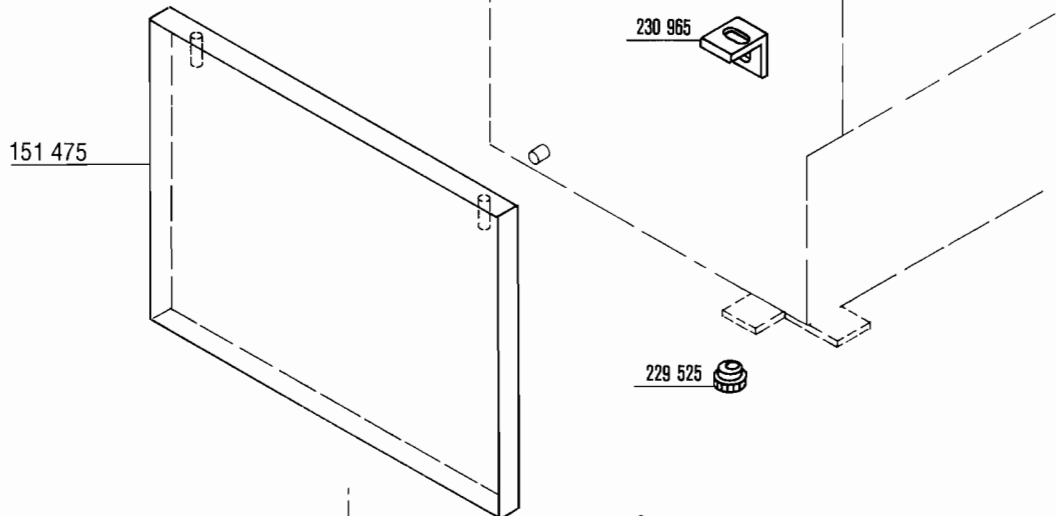
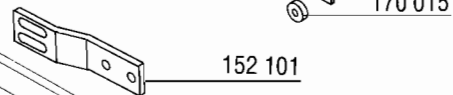
Panneaux latéraux & autominuteur	4
Module pré lavage 700 mm.....	5
Pré lavage - système d'avancement	6
Module de 900 mm.....	7
Pompe (module de 700 mm).....	8
Pompe (module de 900 mm).....	9
Rampes de lavage & pré lavage	10
Rampes de lavage latérales	11
Vidange de lavage & pré lavage.....	12
Chauffage du bac & interrupteur à flotteur	13
Chauffage du bac - eau surchauffée / vapeur	14
Zone de rinçage.....	15
Rampes de rinçage	16
Pompe de double rinçage.....	17
Tuyauterie-2 arrivées d'eau:	
France et Export.....	18
UK et Allemagne.....	19
Tuyauterie-1 arrivée d'eau:	
UK et Allemagne.....	20
France et Export.....	21
By-pass C6 (condenseur).....	22
Chaudière électrique	23
Chaudière - eau surchauffée / vapeur	24-25
Capot d'extraction.....	26
Extraction de buées - ventilateur.....	27
Condenseur - habillage	28
Condenseur C5 / C6.....	29
Entraînement	30
Berceau & rails	31
Zone de séchage.....	32
Soufflage électrique D5.....	33
Soufflage vapeur & eau surchauffée D5.....	34
Position des rideaux	35

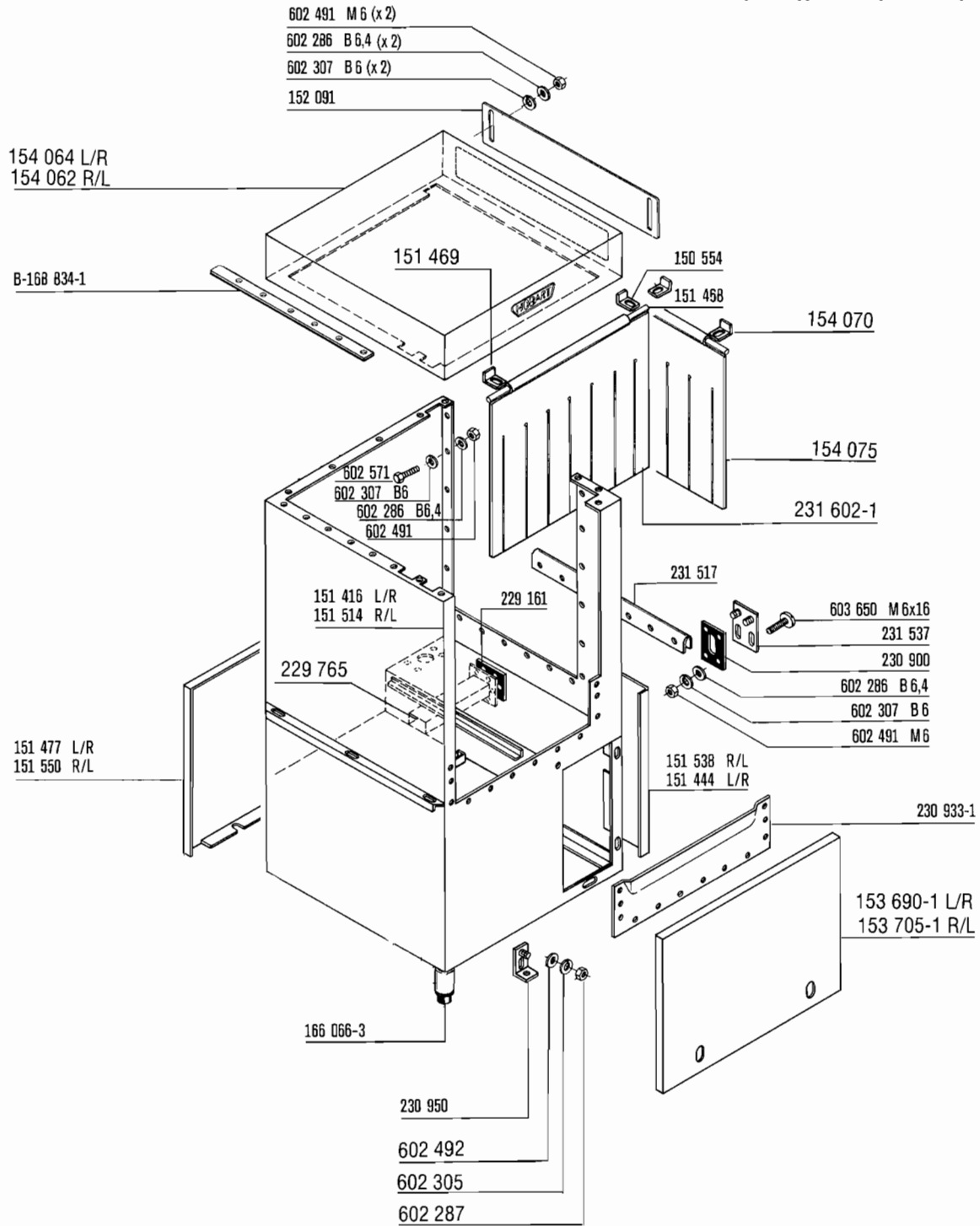
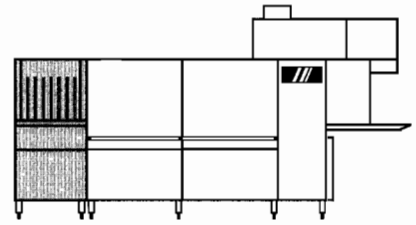
Inhoud

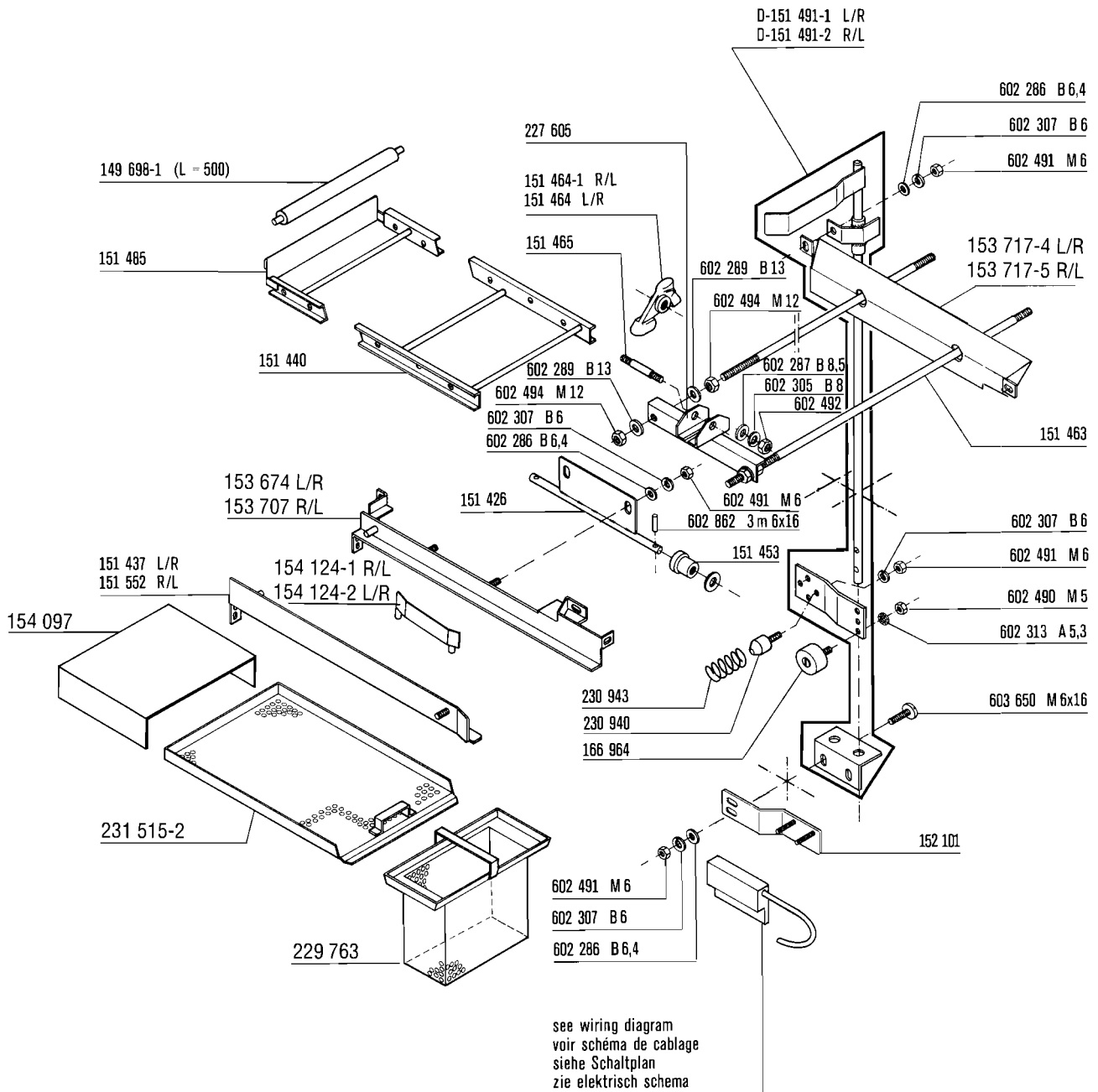
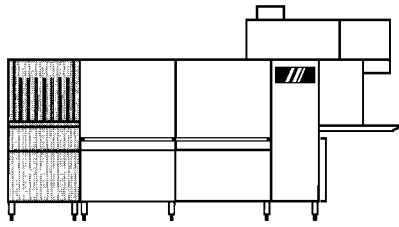
Zijdelingse bekledingen & autotimer.....	4
Voorwassegment 700 mm.....	5
Aandrijving - vorwas	6
Segment 900 mm	7
Waspomp (700 mm segment)	8
Waspomp (900 mm segment)	9
Was- en voorwasysteem	10
Zijbewassing.....	11
Afvoer vorwas & was	12
Tankverwarming & niveauschakelaar.....	13
Tankverwarming -heet water stoom	14
Naspoel segment.....	15
Naspoelsysteem	16
Duo naspoelpomp	17
Leidingwerk-2 vulpunt:	
Frankrijk en Export	18
UK en Duitsland.....	19
Leidingwerk-1 vulpunt:	
UK en Duitsland.....	20
Frankrijk en Export	21
By-pass C6 (kondensator).....	22
Booster elektrisch	23
Booster - stoom / heet water	24-25
Wasem afzuiging - kap	26
Wasem afzuiging - ventilator	27
Kondensator - bekleding.....	28
Kondensators C5 / C6	29
Aandrijving.....	30
Zwaai raam & spoorweg.....	31
Droogzone	32
Ventilator van drogger elektrisch D5	33
Ventilator van drogger heet water & stoom D5.....	34
Volgorde van de gordijnen.....	35

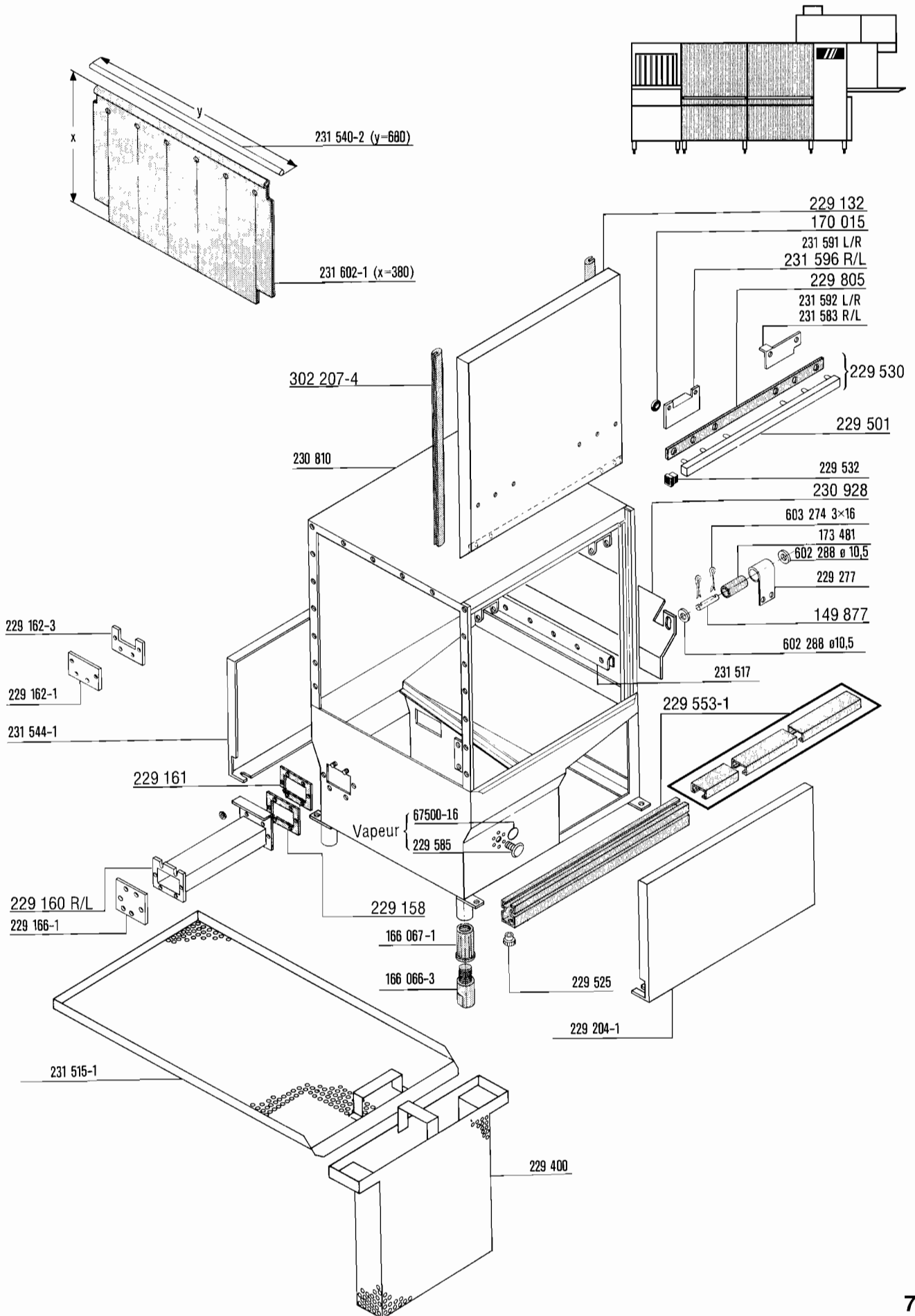


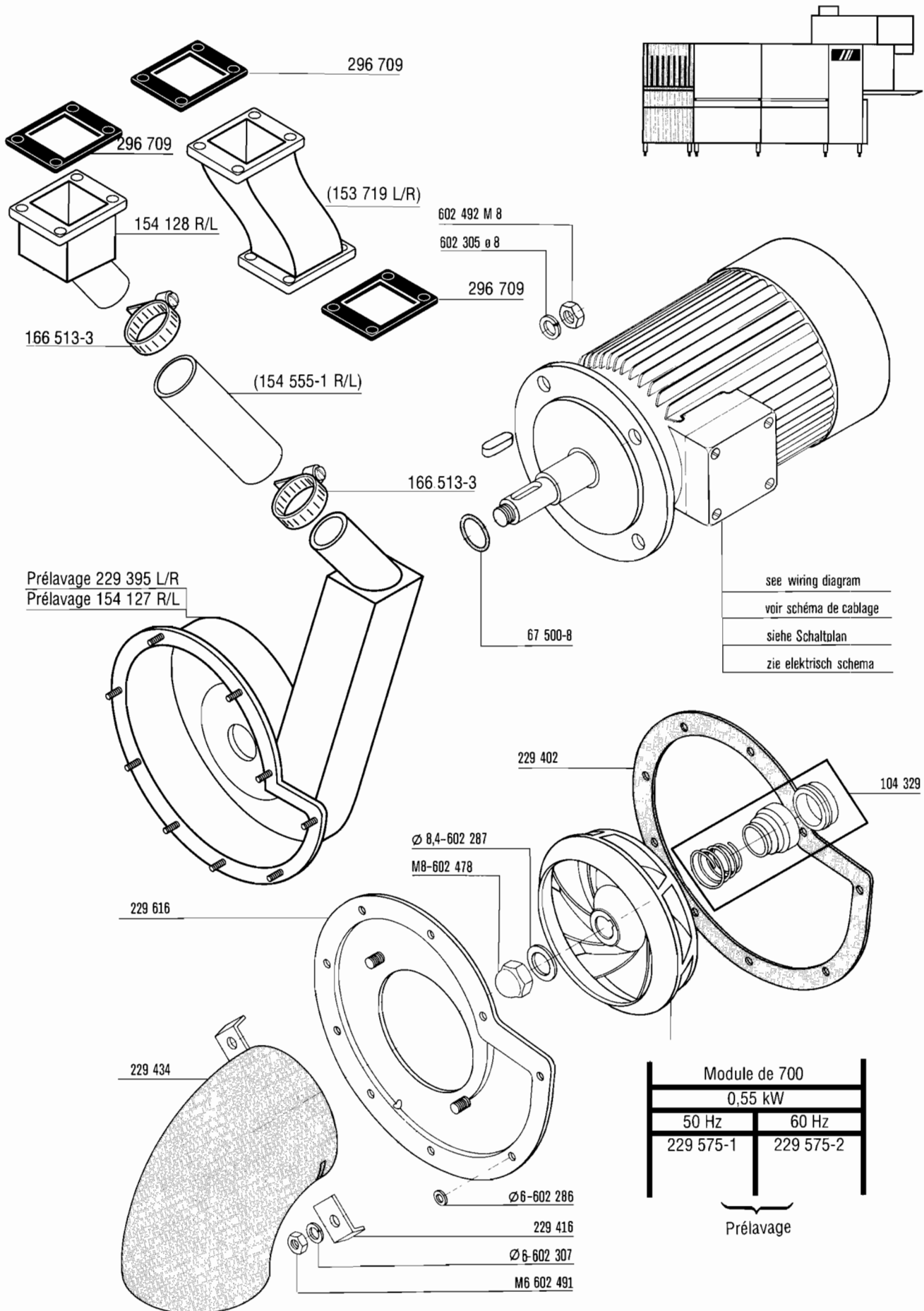
see wiring diagram
voir schéma de cablage
siehe Schaltplan
zie elektrisch schema

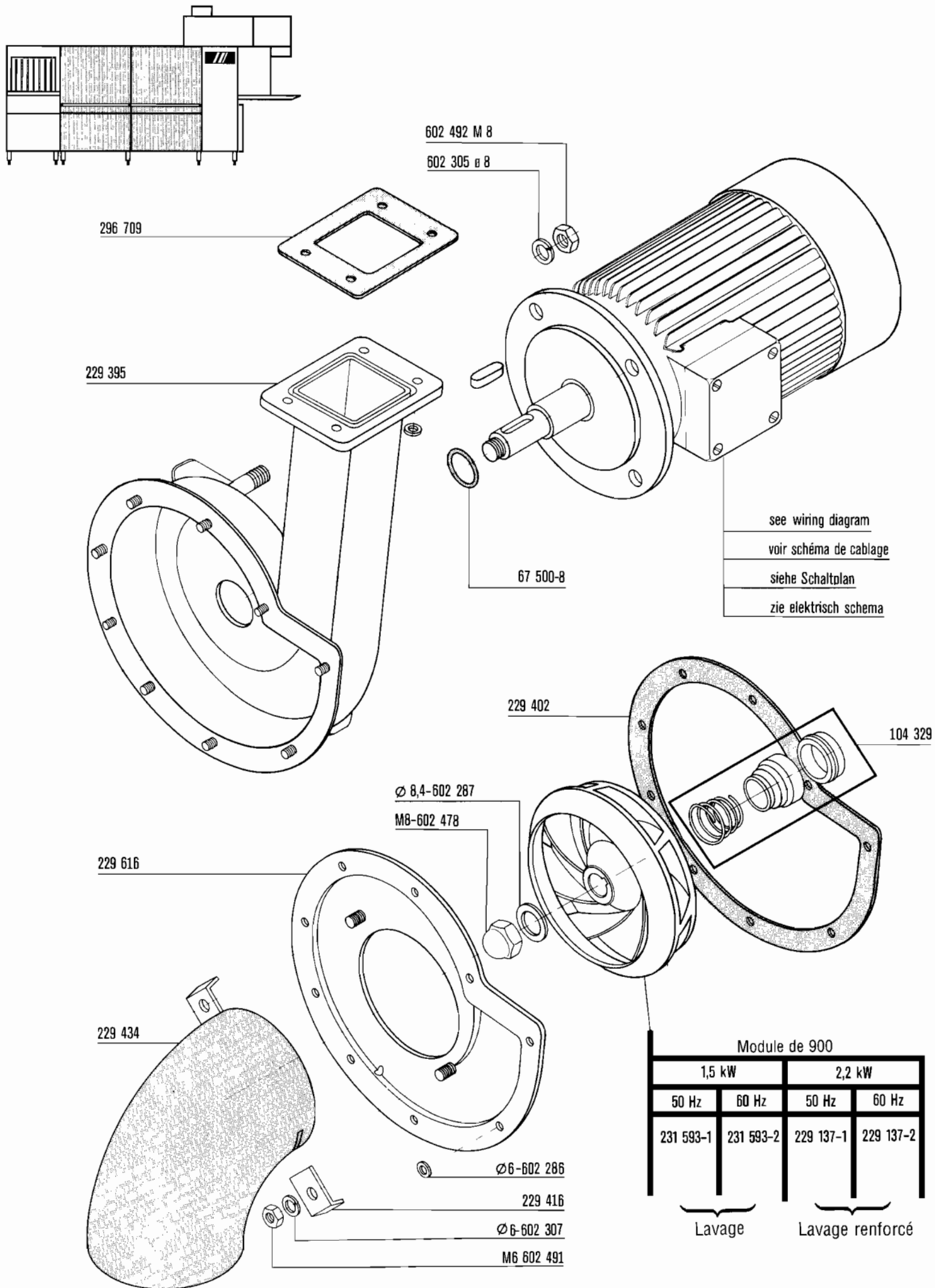


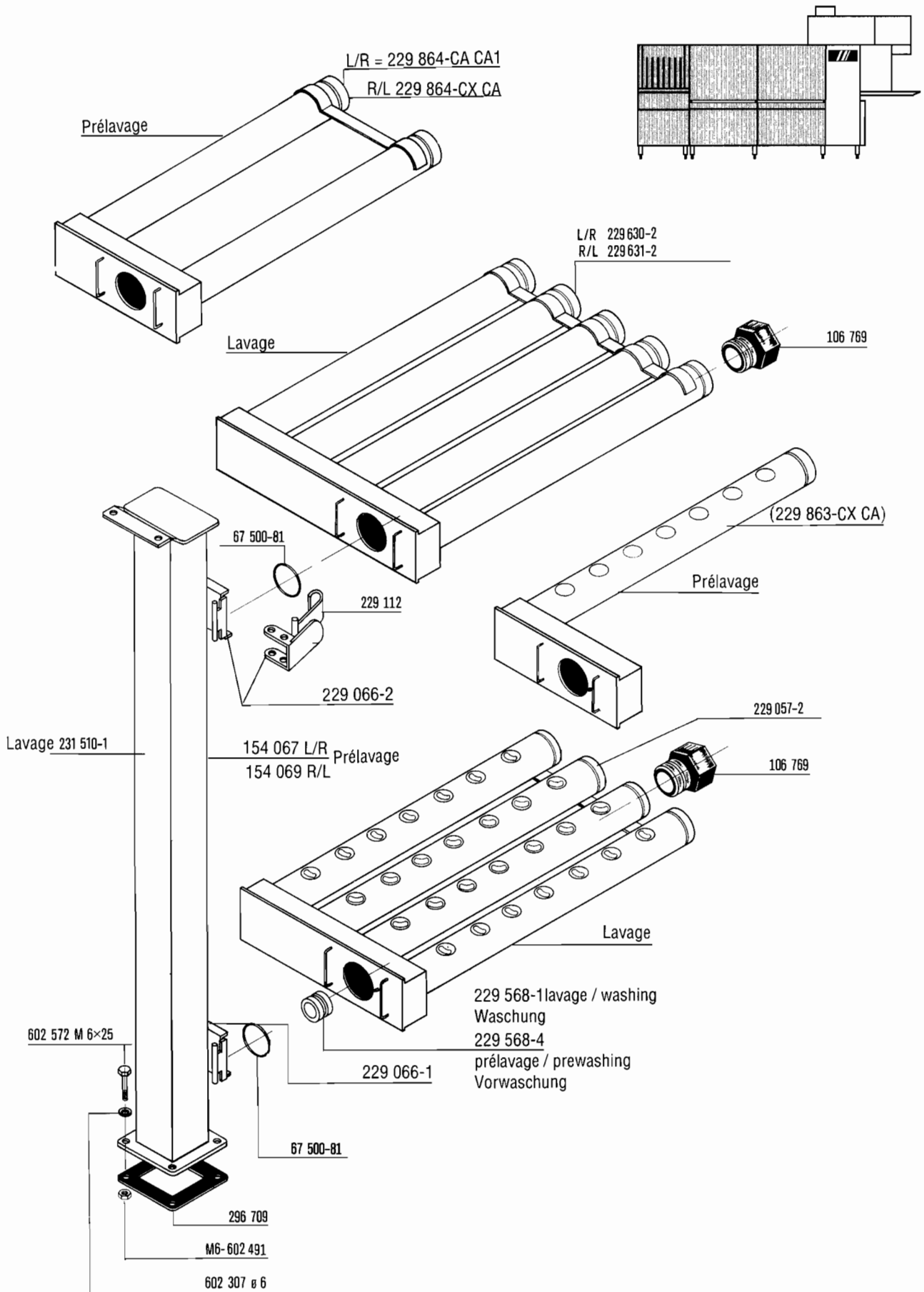


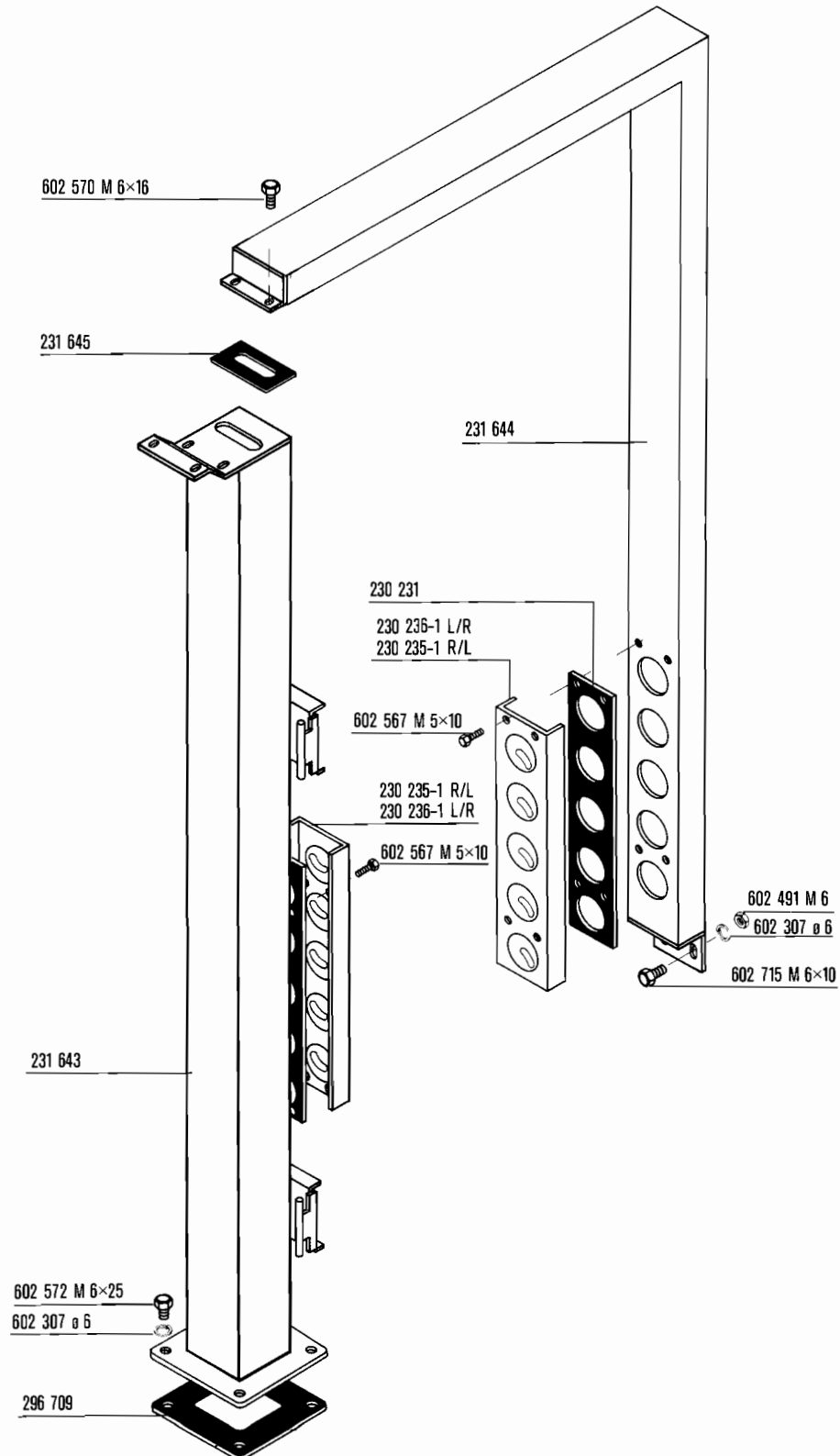
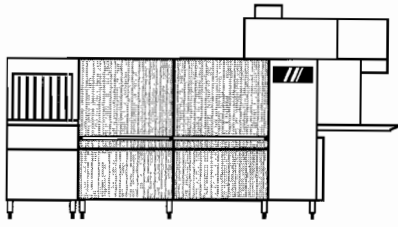


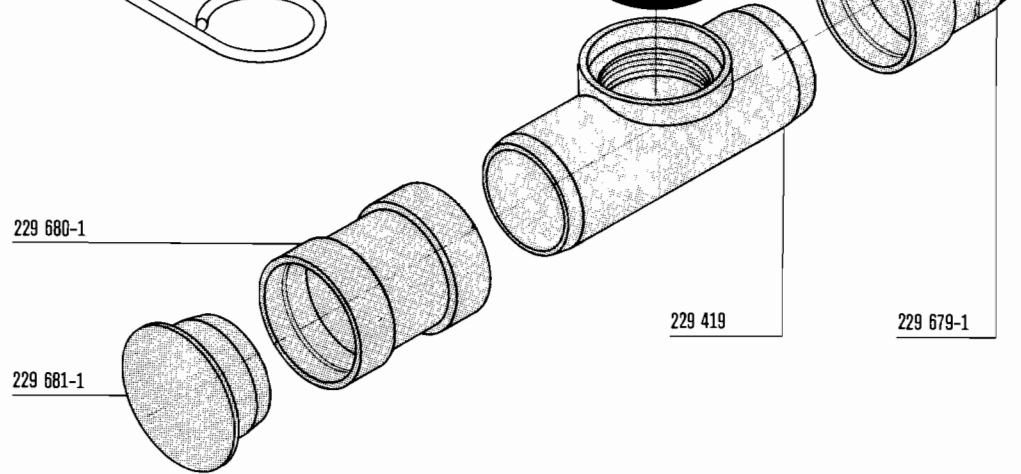
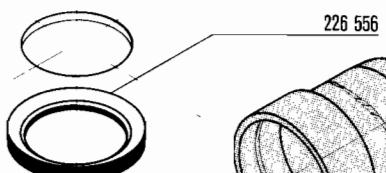
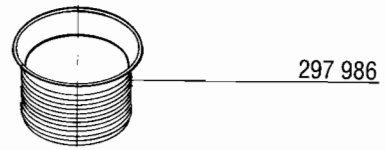
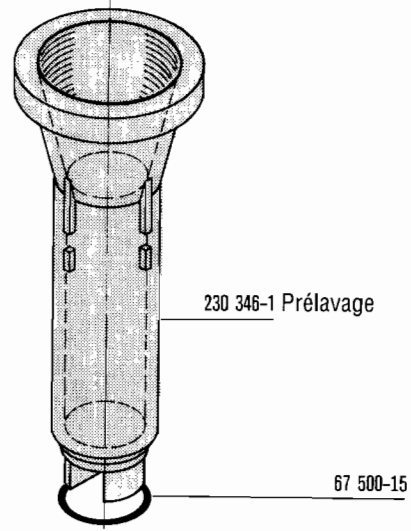
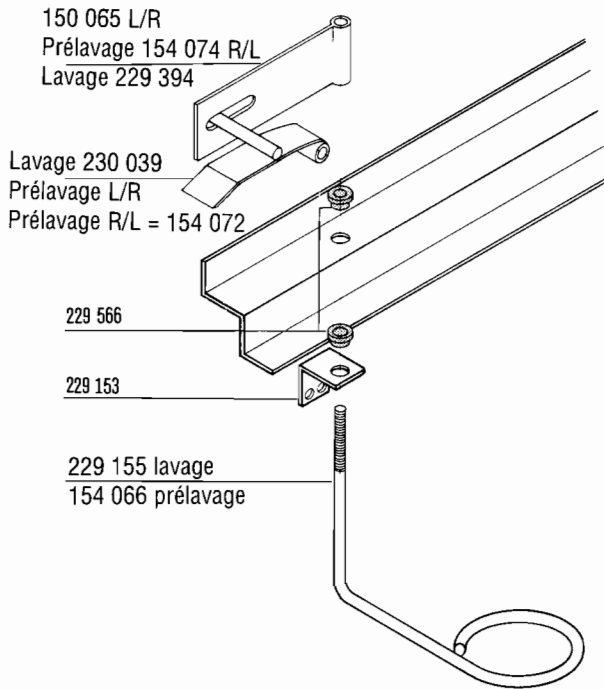
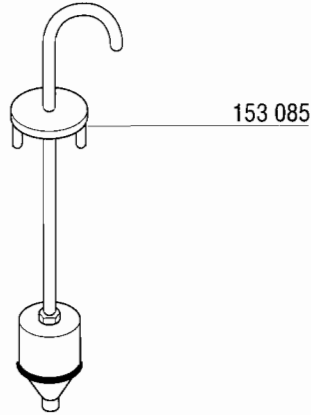
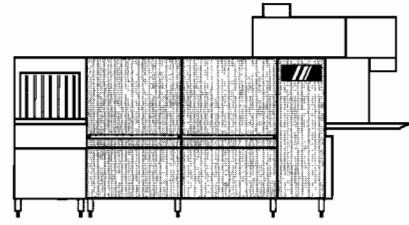


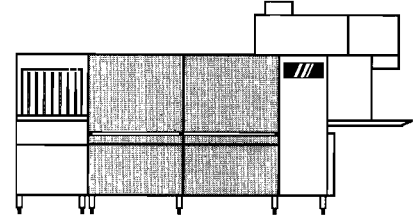




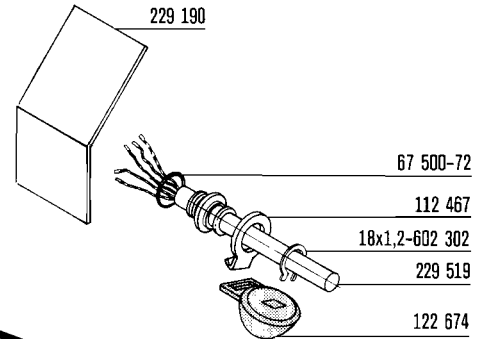
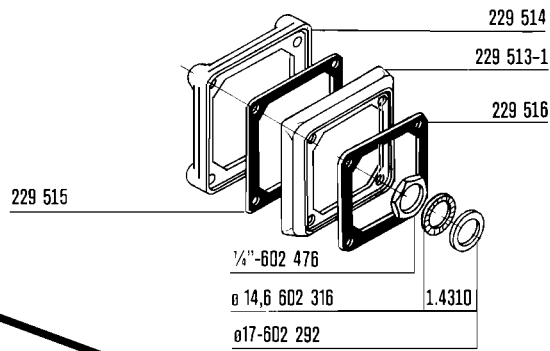




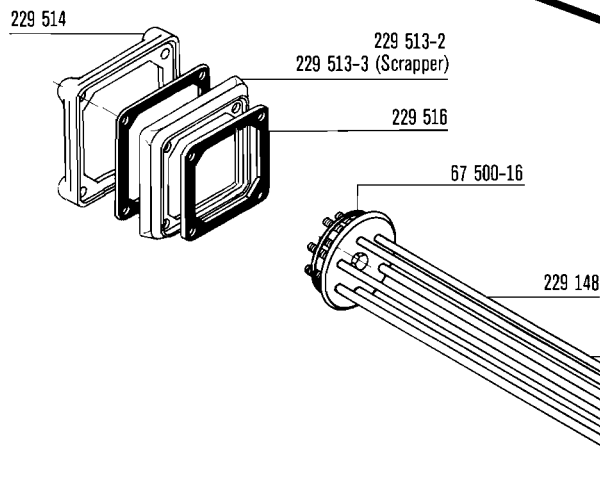




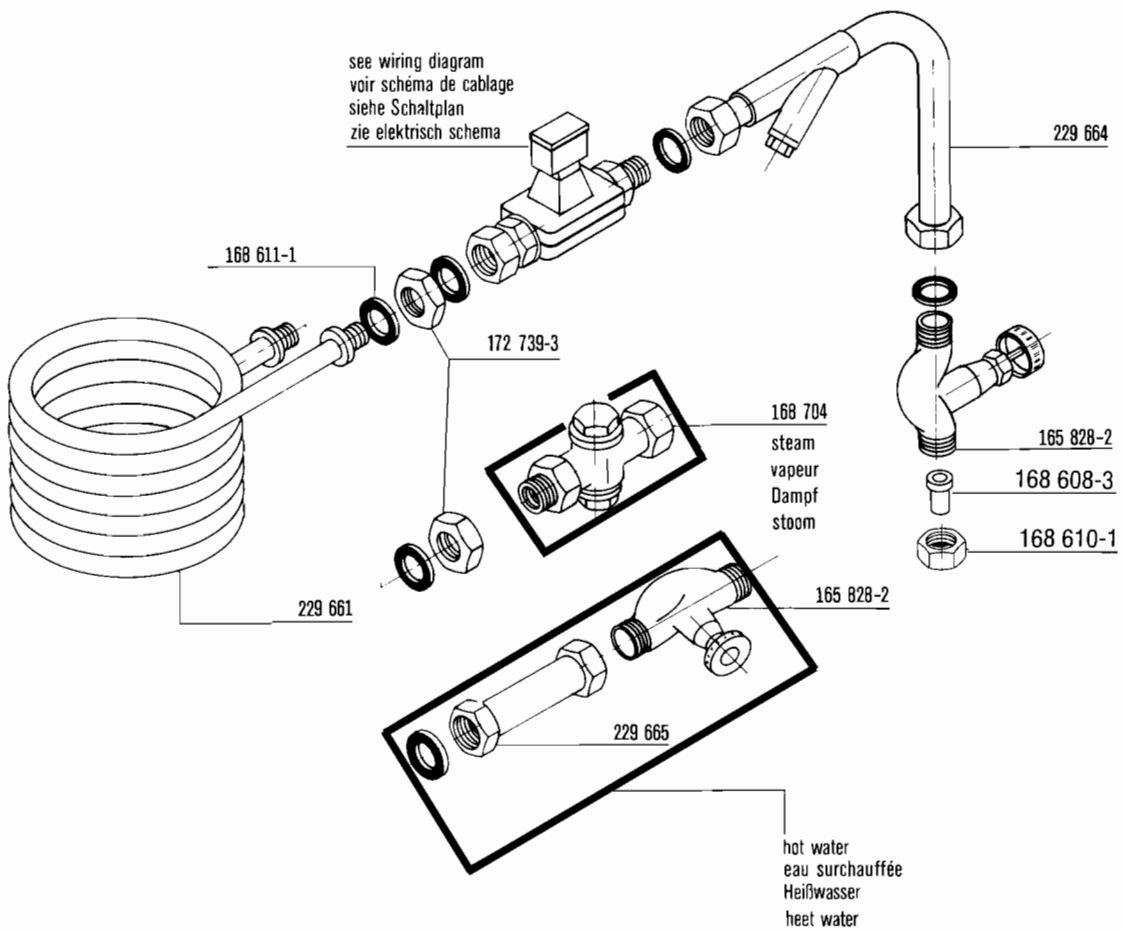
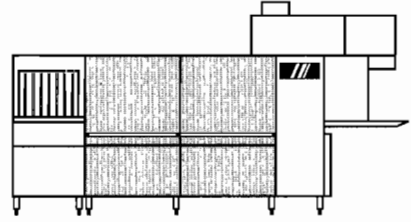
PRELAVAGE
 LAVAGE

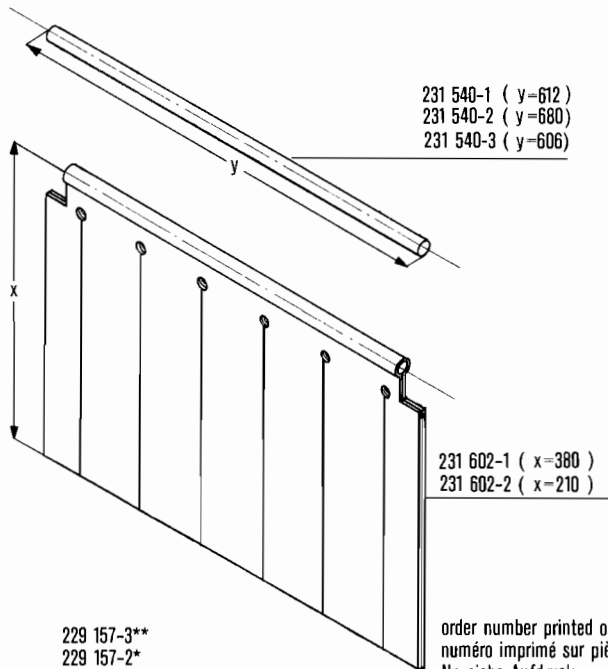
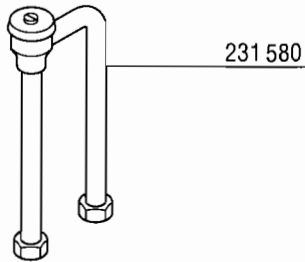
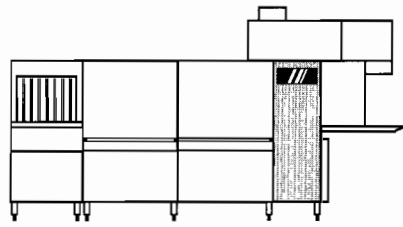


LAVAGE



see wiring diagram
 voir schéma de cablage
 siehe Schaltplan
 zie elektrisch schema

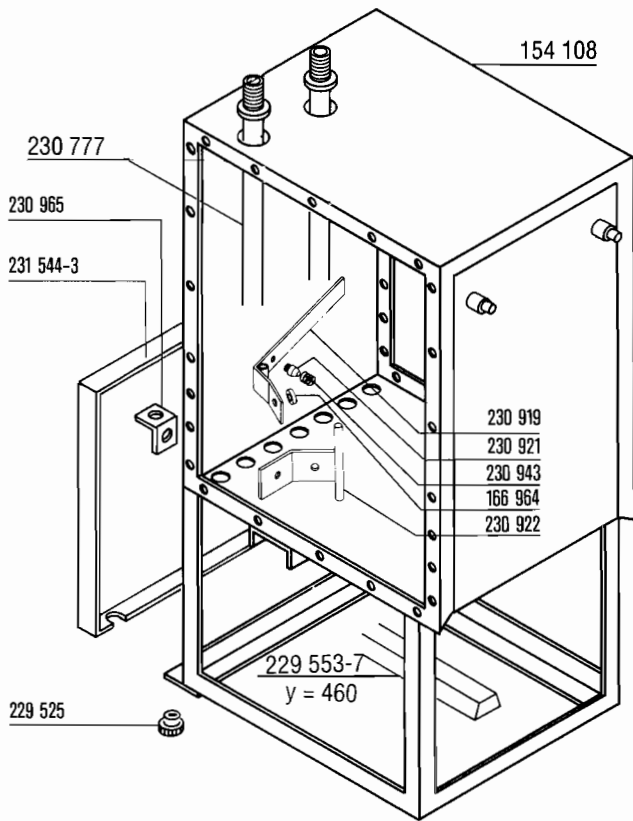




231 540-1 (y=612)
231 540-2 (y=680)
231 540-3 (y=606)

231 602-1 (x=380)
231 602-2 (x=210)

order number printed on part
numéro imprimé sur pièce
Nr. siehe Aufdruck
nummer afgedrukt



154 108

230 777

230 965

231 544-3

230 919
230 921
230 943
166 964
230 922

229 553-7
y = 460

229 525

229 157-3**
229 157-2*
229 167-1 (220-260 V)
229 048
sans condenseur
154 144

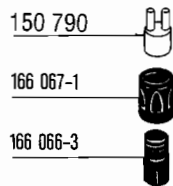
229 169 (4 m)

230 733

230 988
vapeur / steam
Dampf / stoom
+
panneau / panel
Verkleidung / bekleiding
231 601

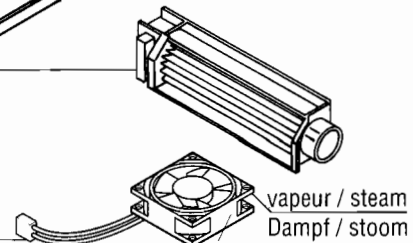
154 104
electrique / electric
elektrisch

229 518-2
152 527 (électrique)
152 528 (vapeur)

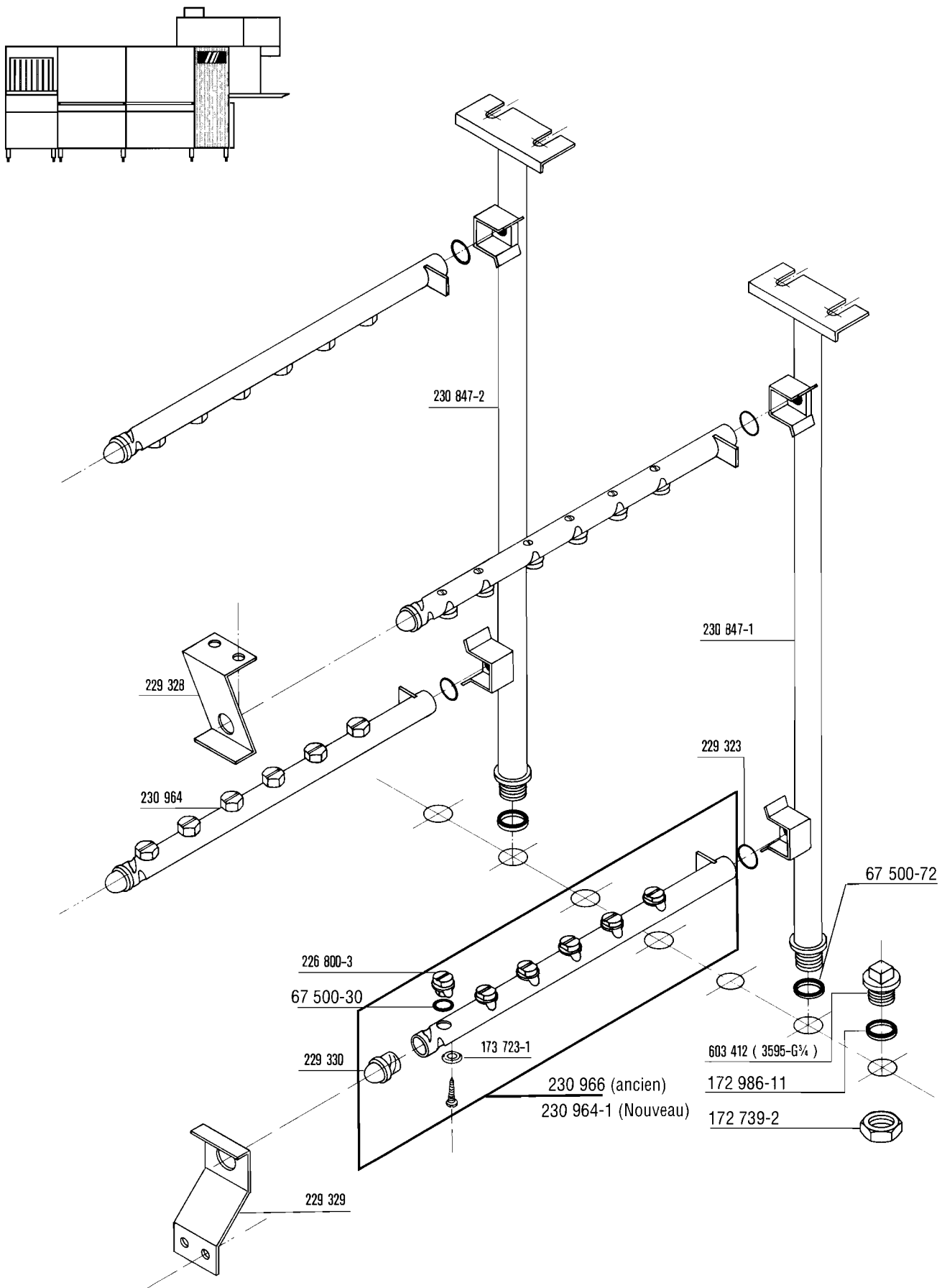


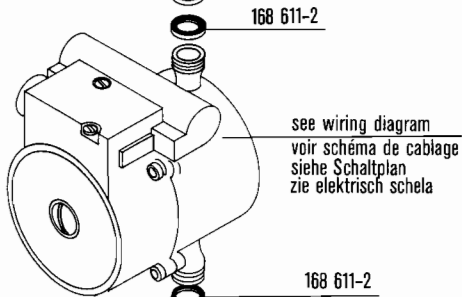
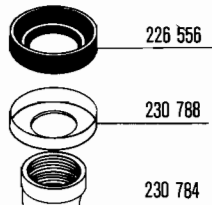
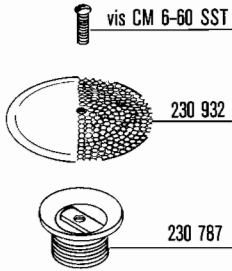
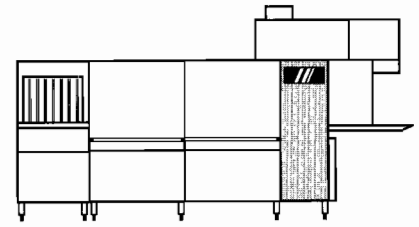
230 926

see wiring diagram
voir schéma de câblage
siehe Schaltplan
zie elektrisch schema

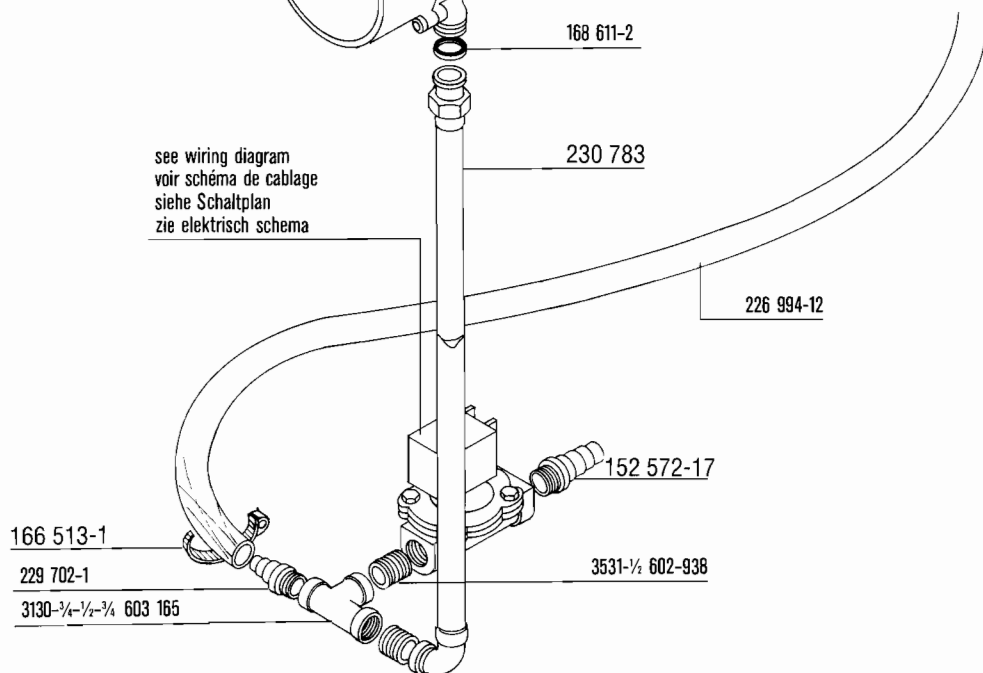


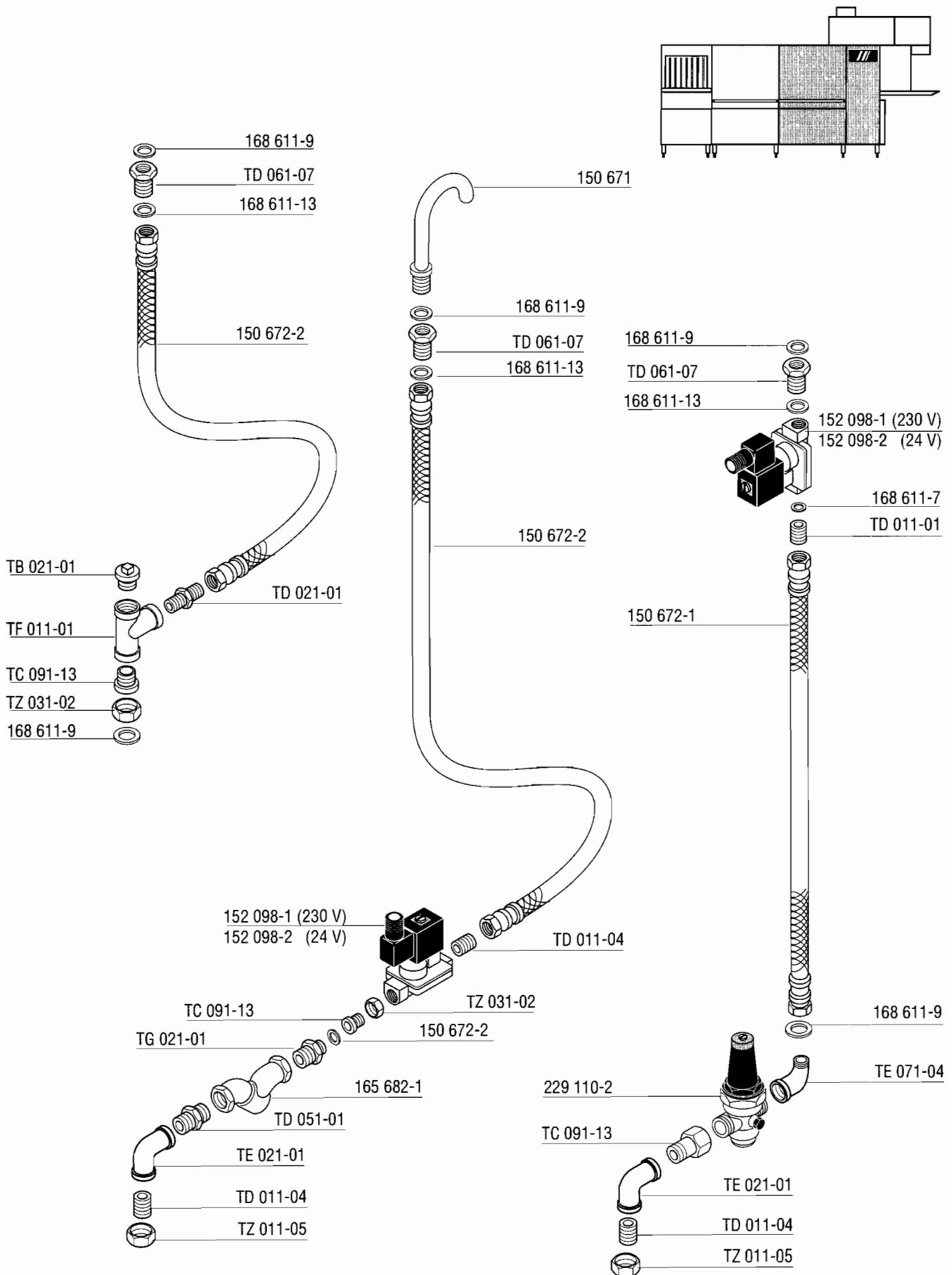
** yellow, jaune, gelb, geel
* green, vert, grün, groen

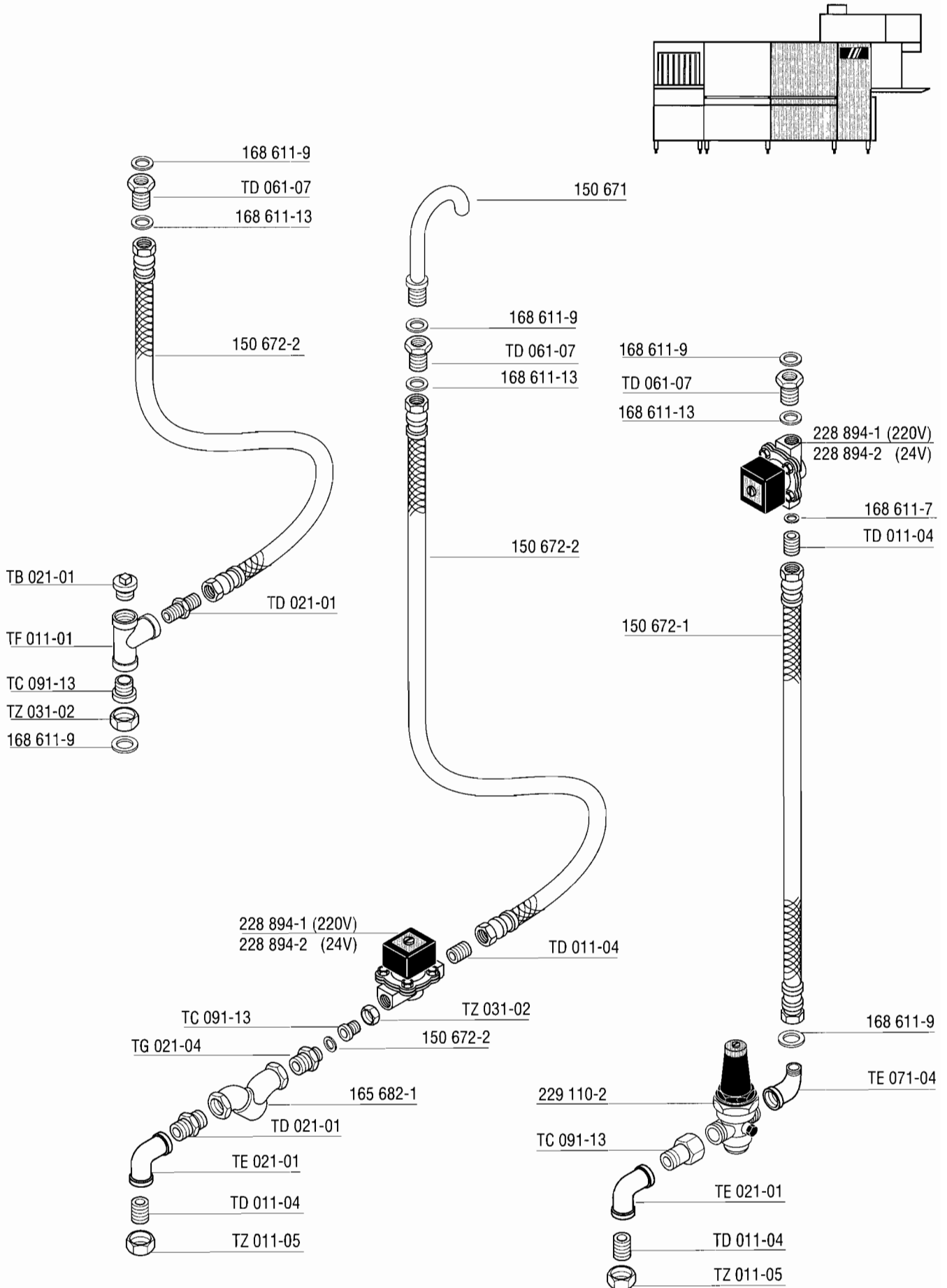


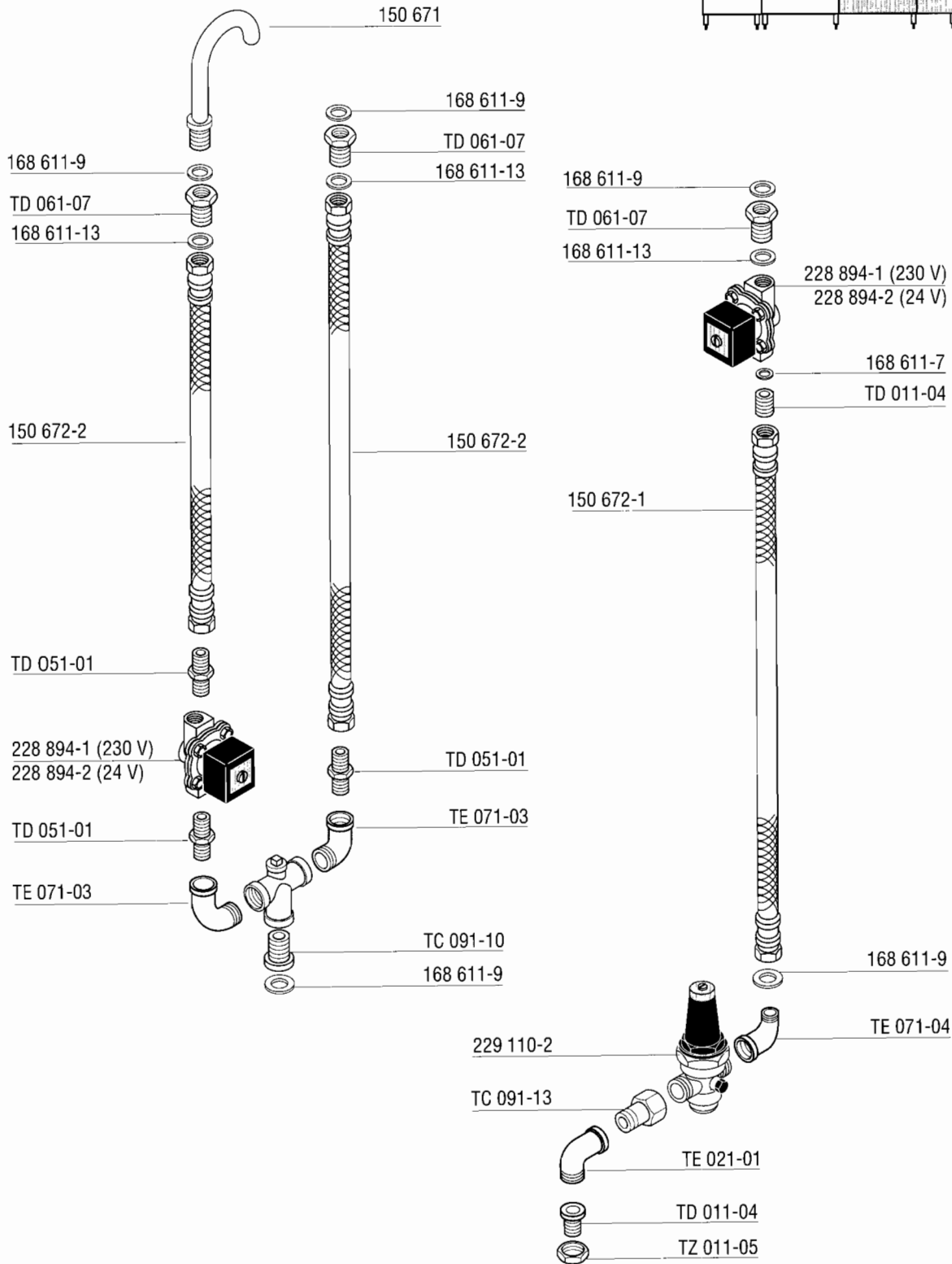
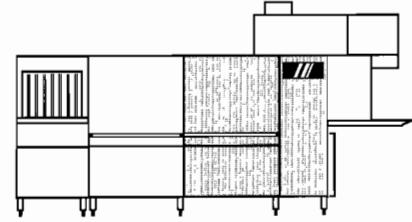


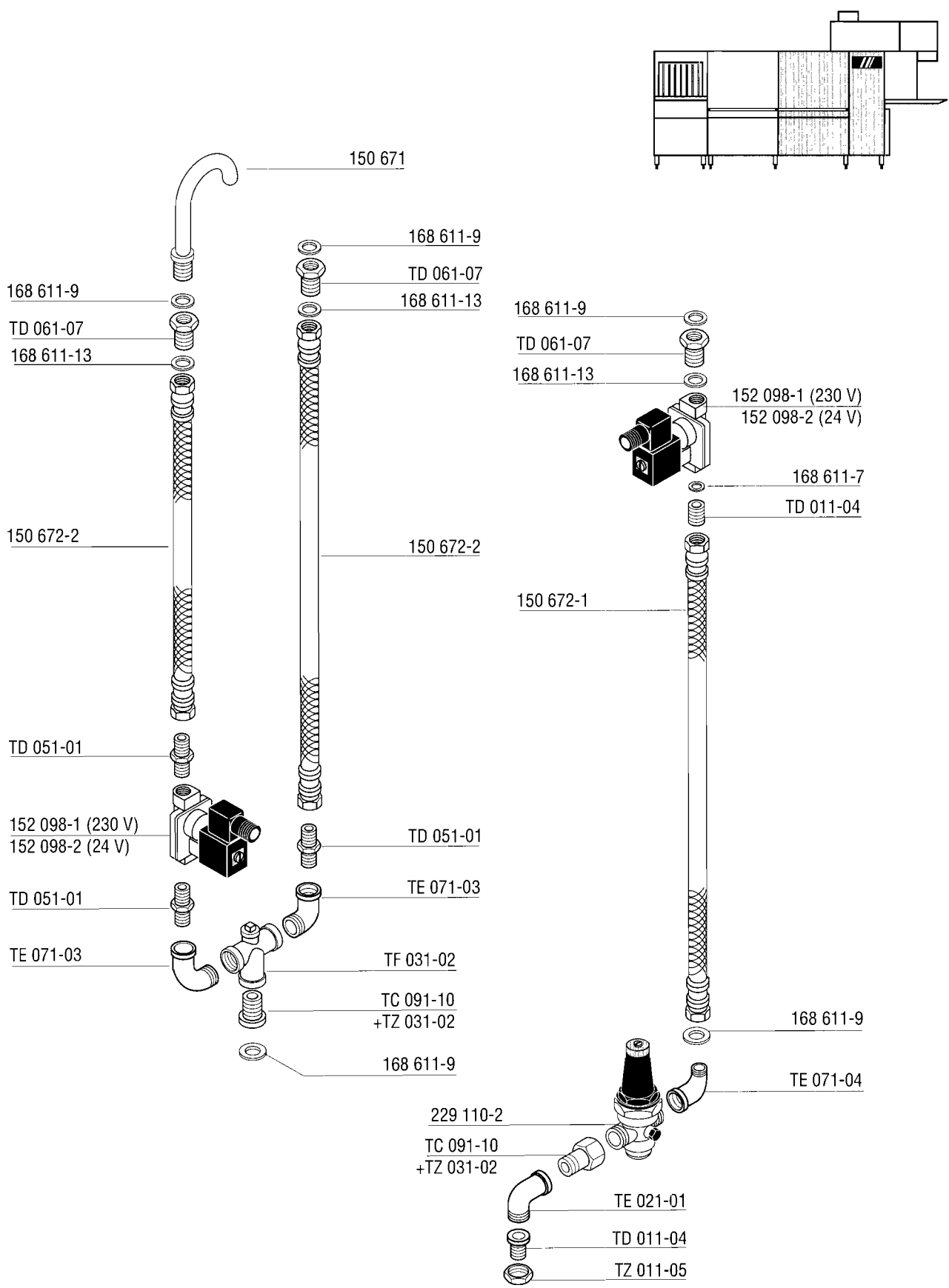
see wiring diagram
 voir schéma de cablage
 siehe Schaltplan
 zie elektrisch schema

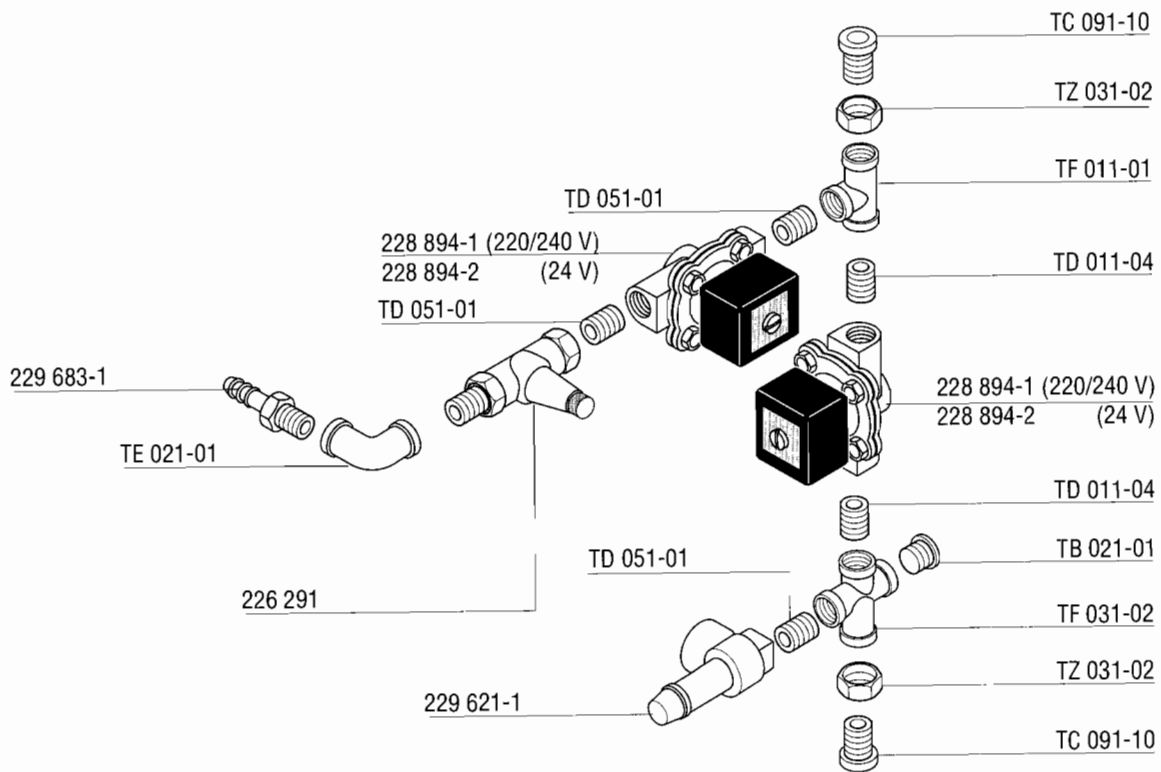
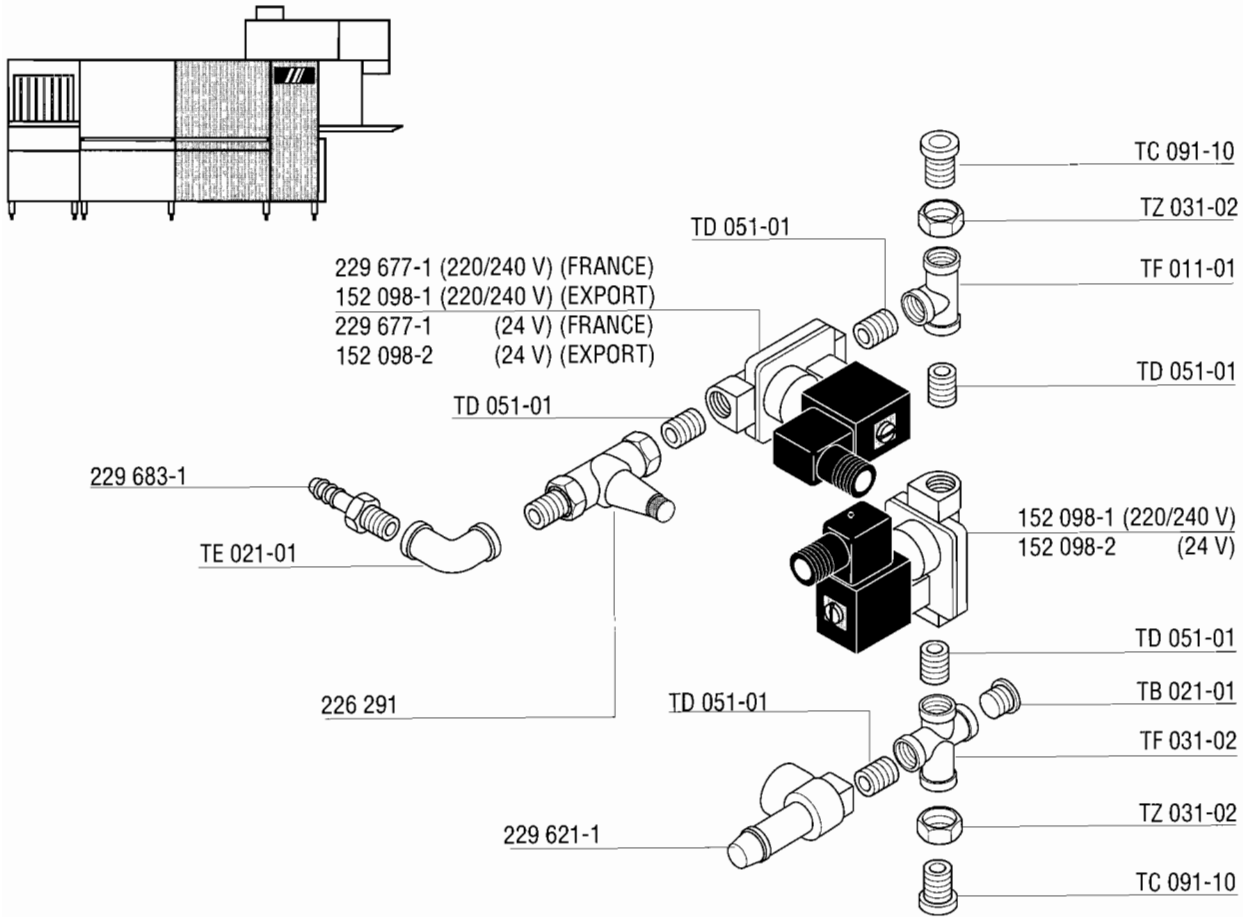


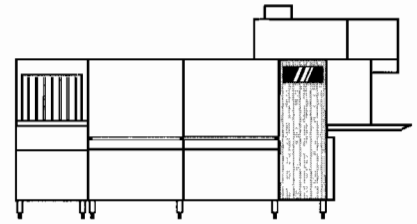




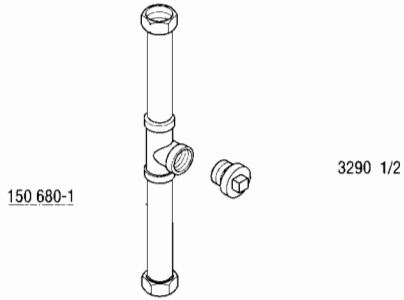




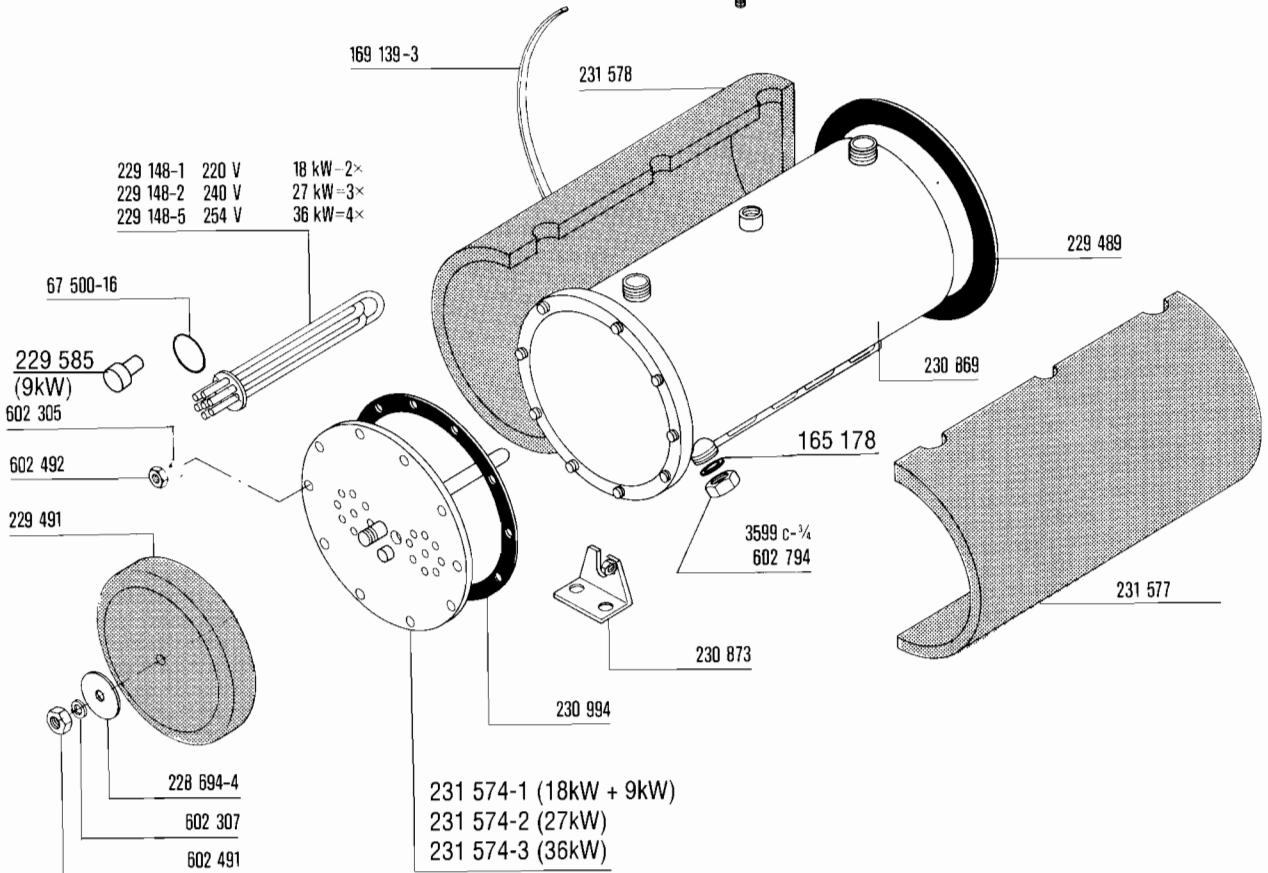
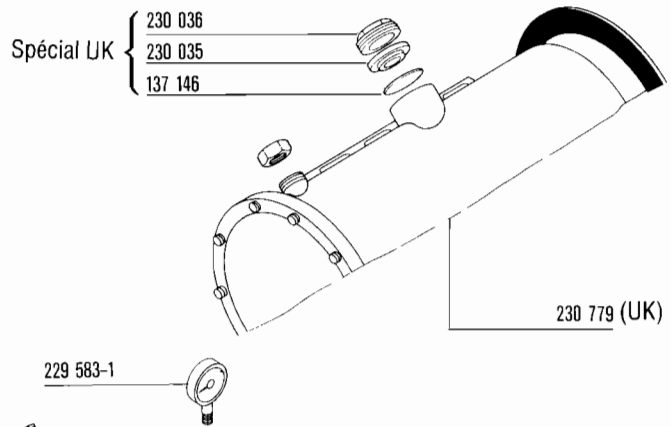
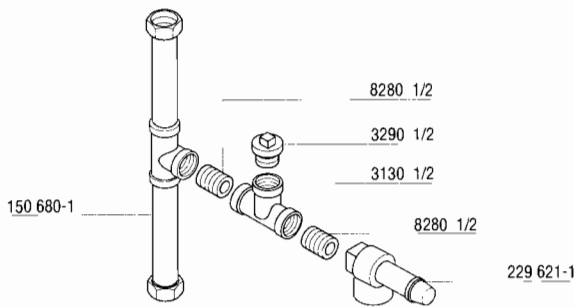


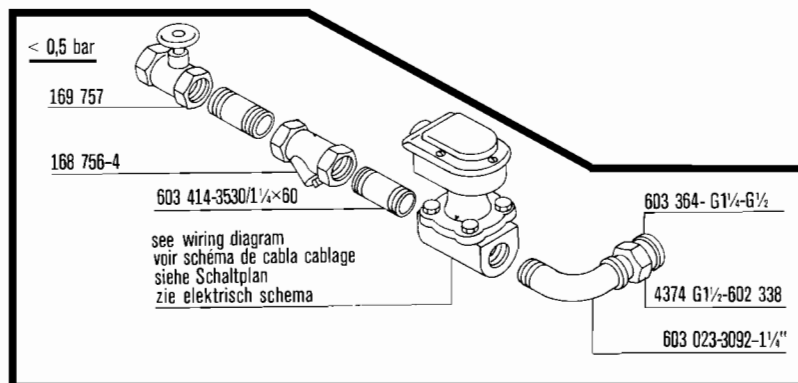
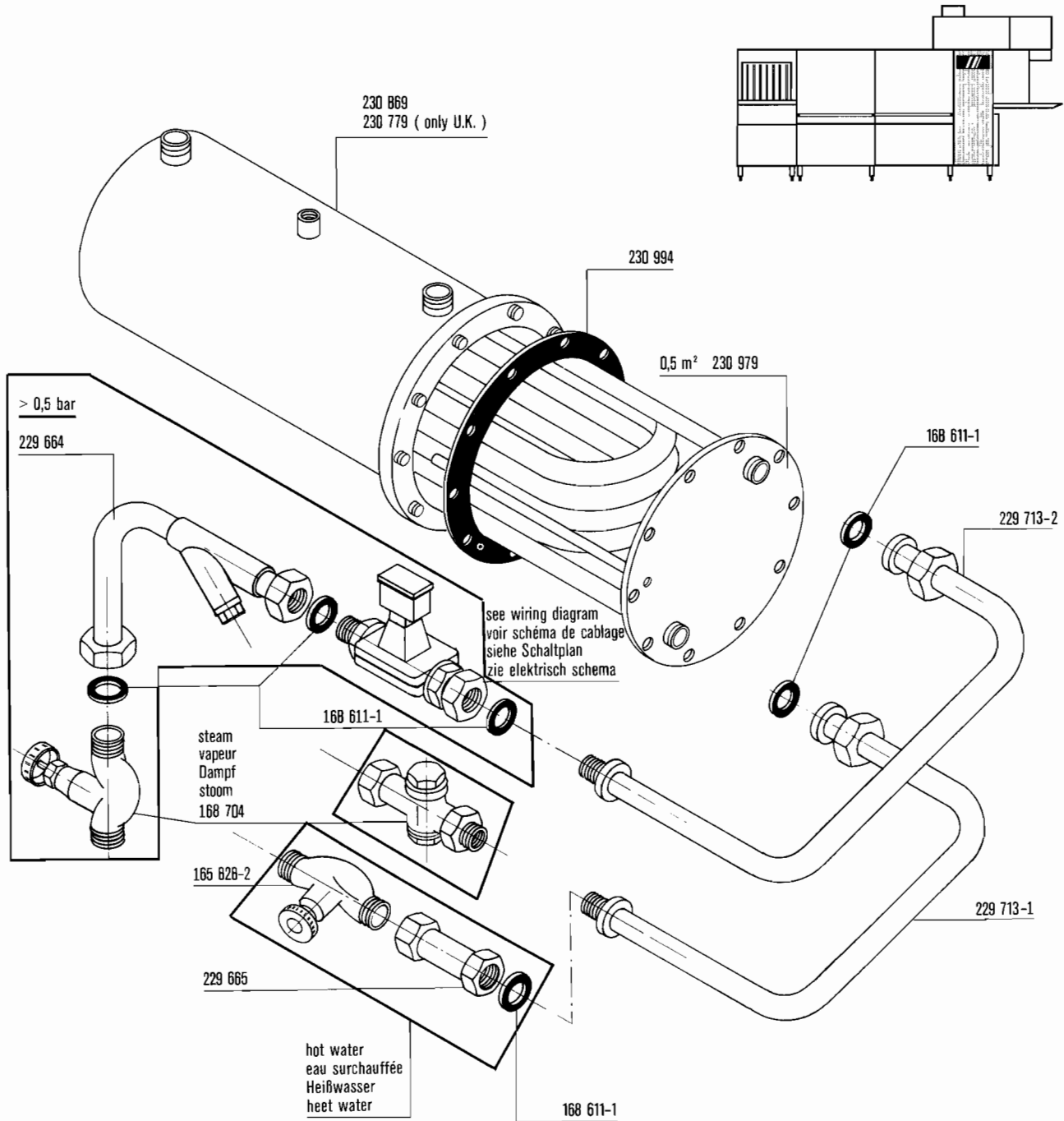


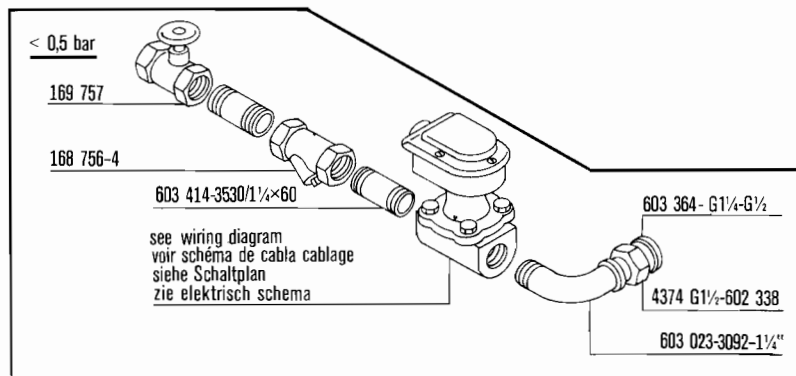
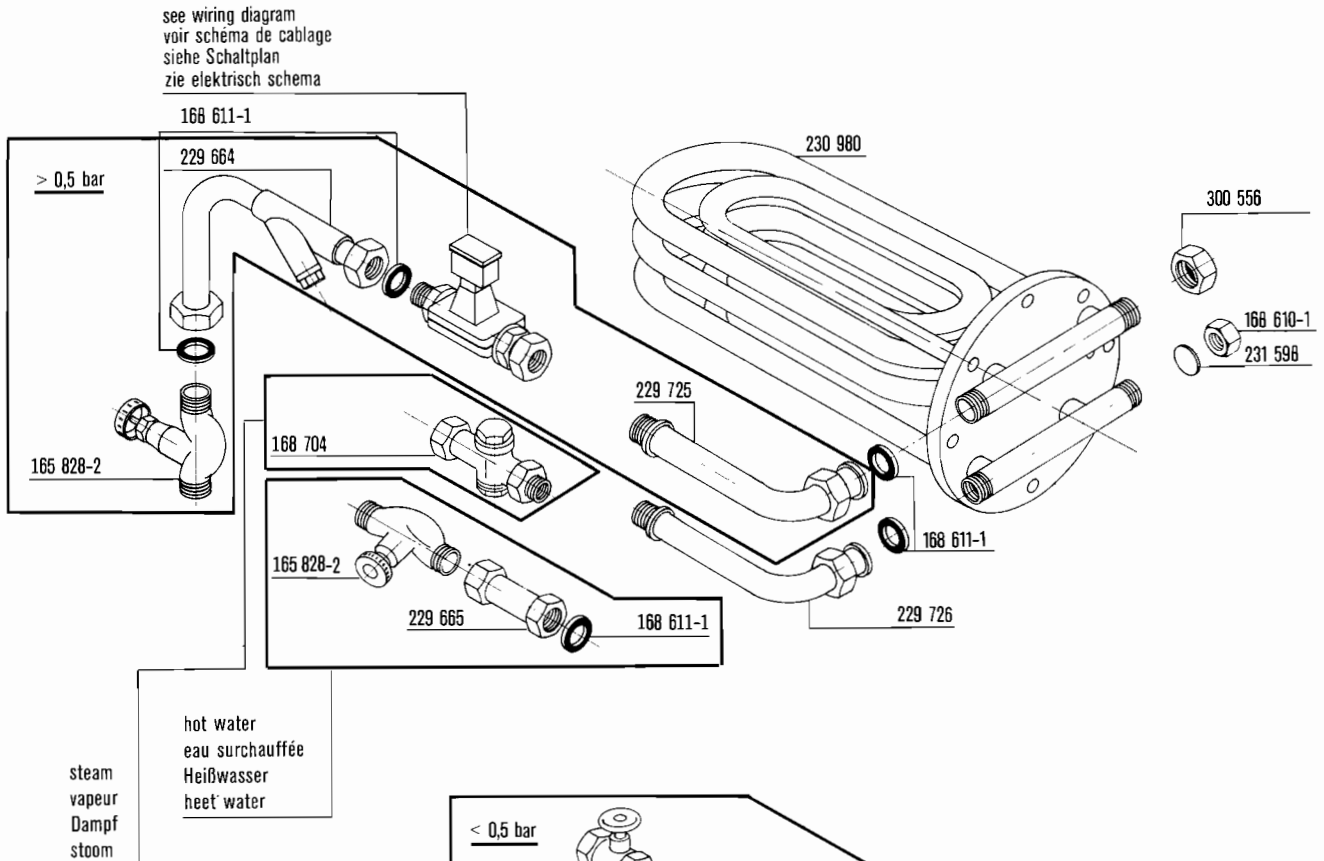
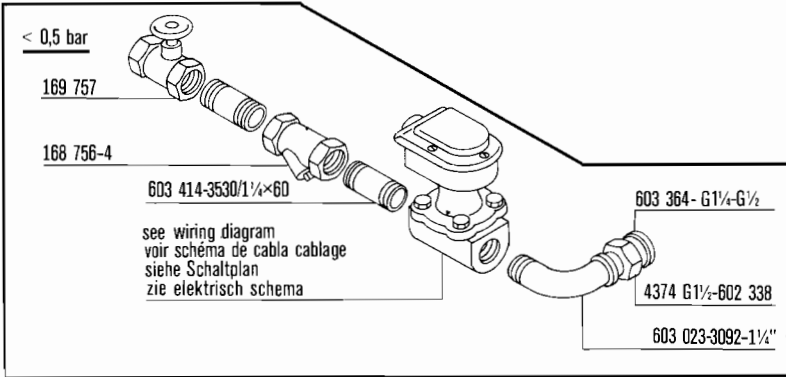
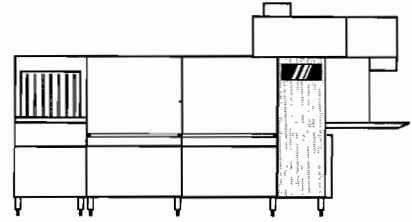
BOOSTER OUTLET F / G / EXPORT

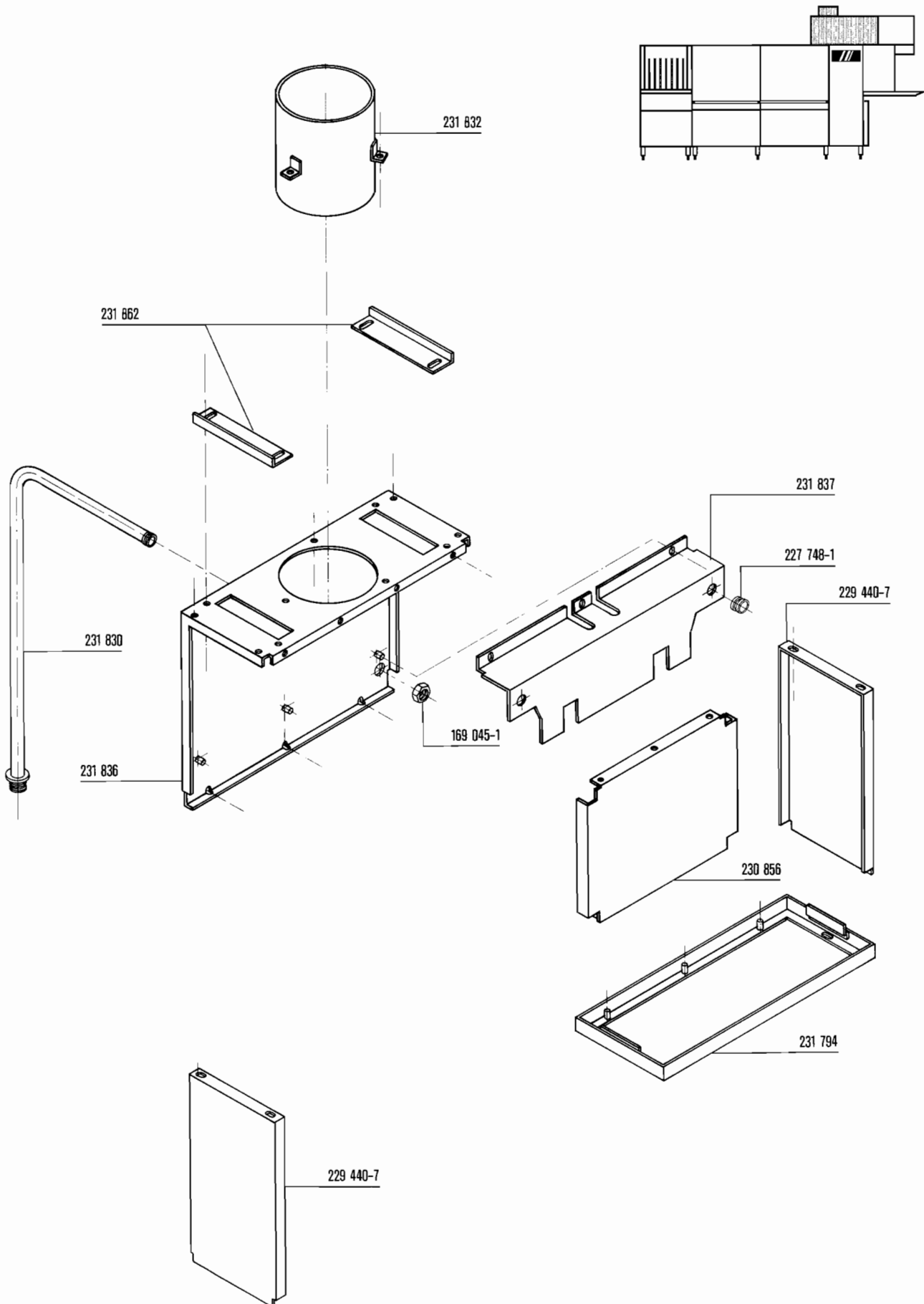


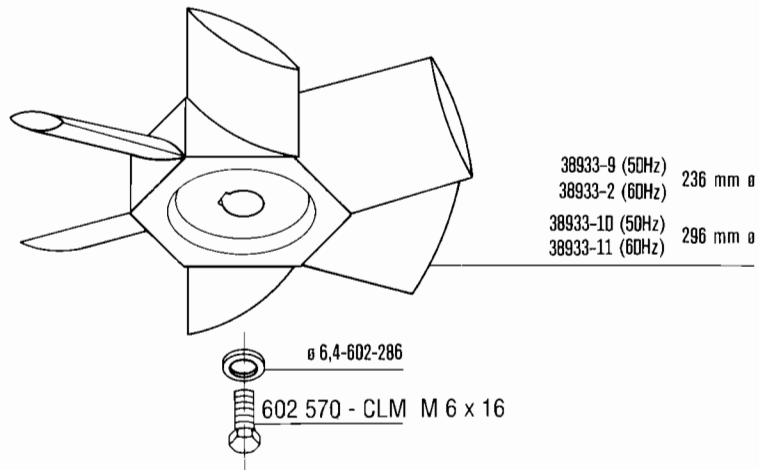
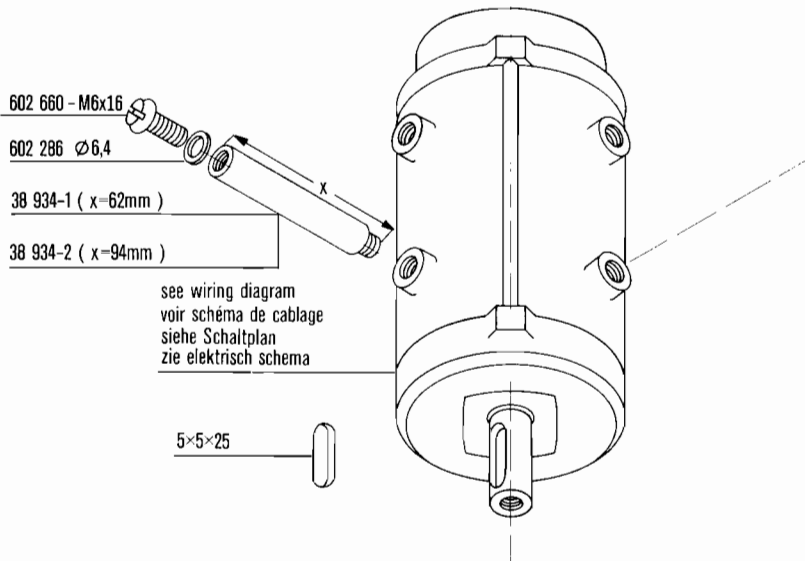
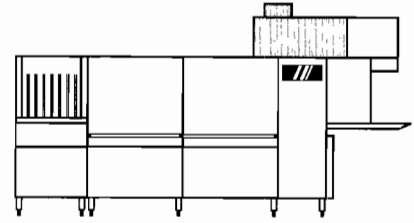
BOOSTER OUTLET UK

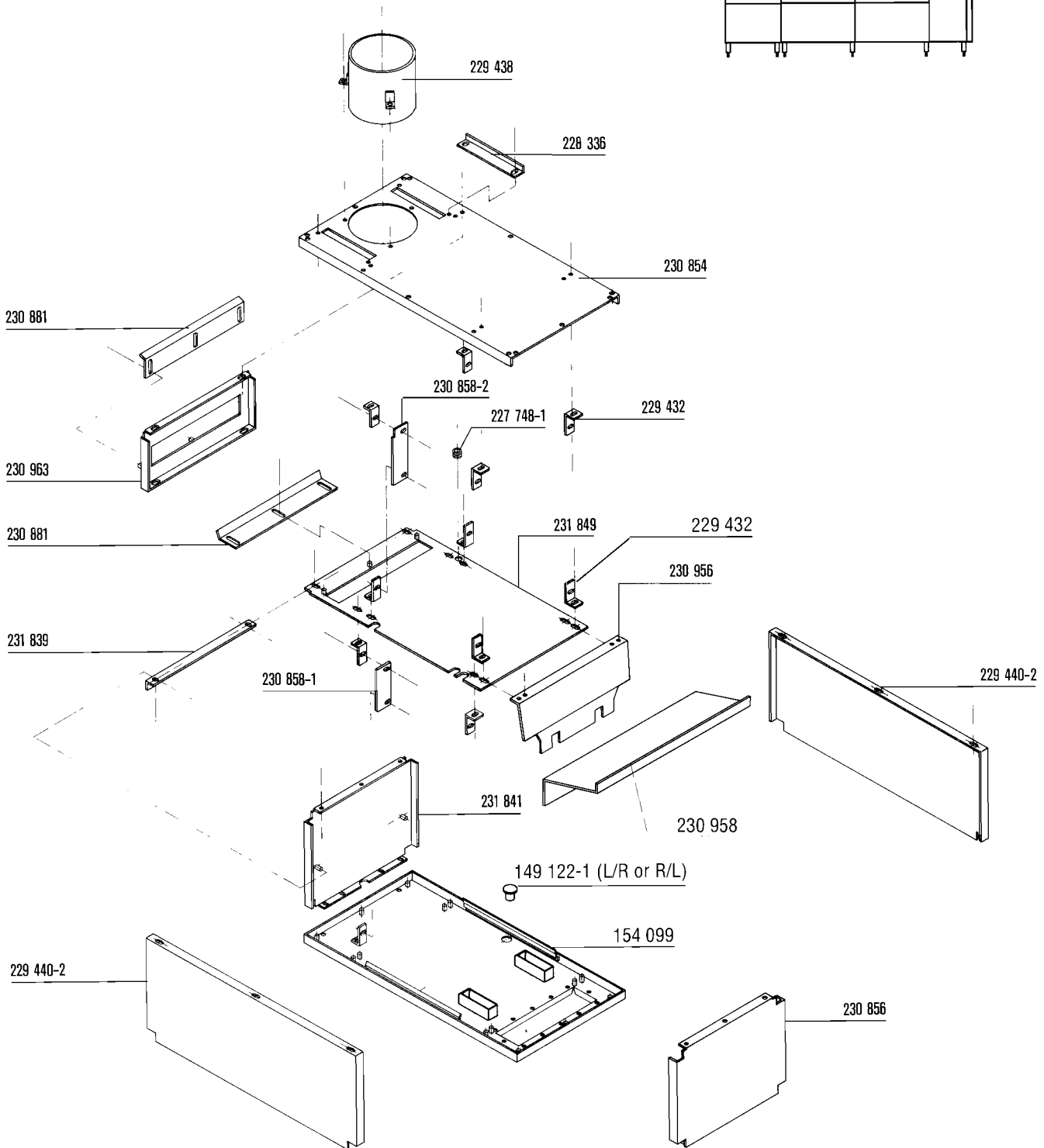
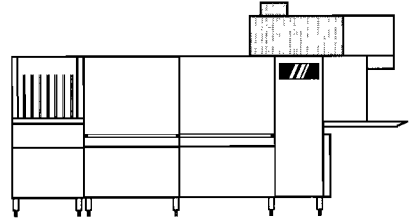




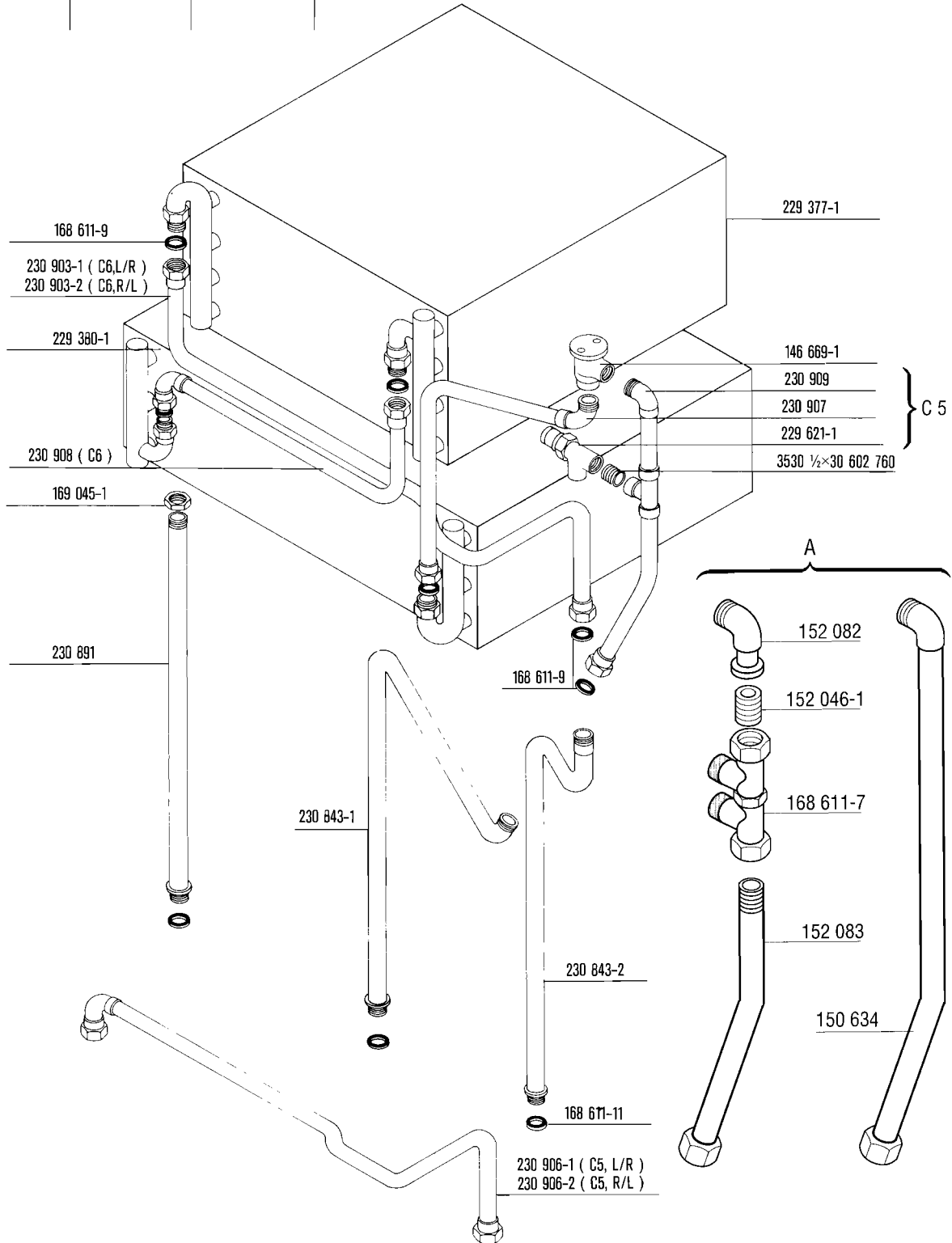
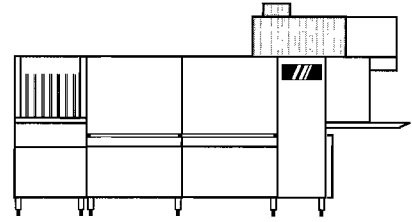


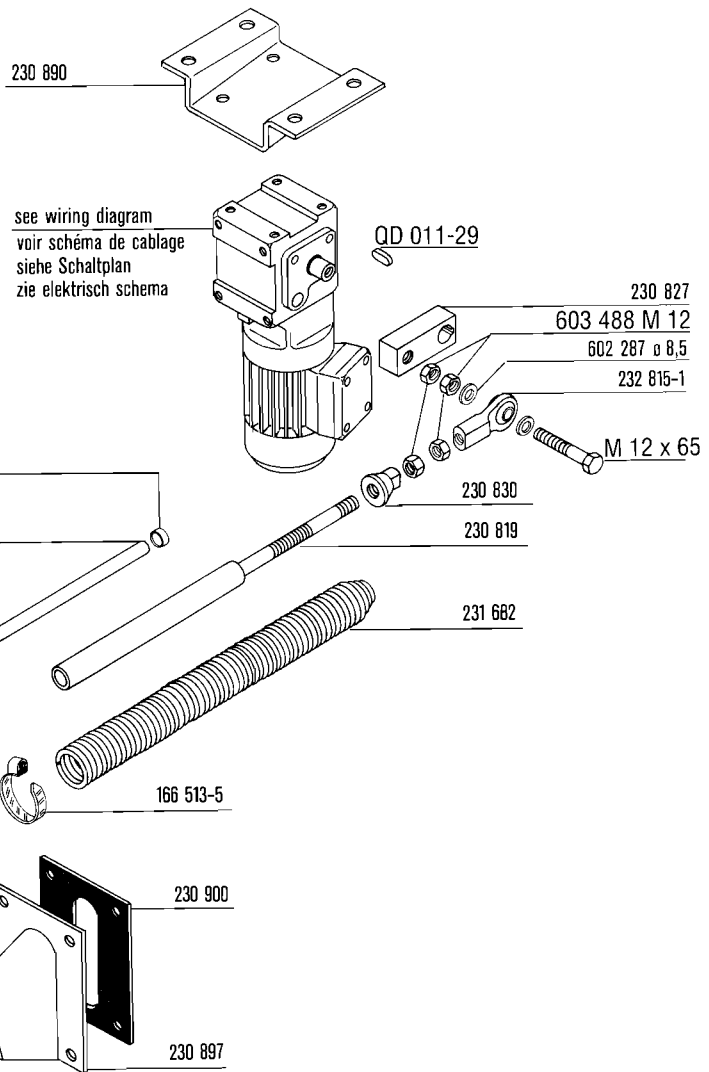
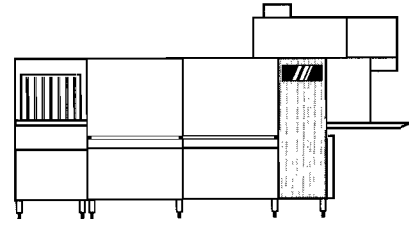


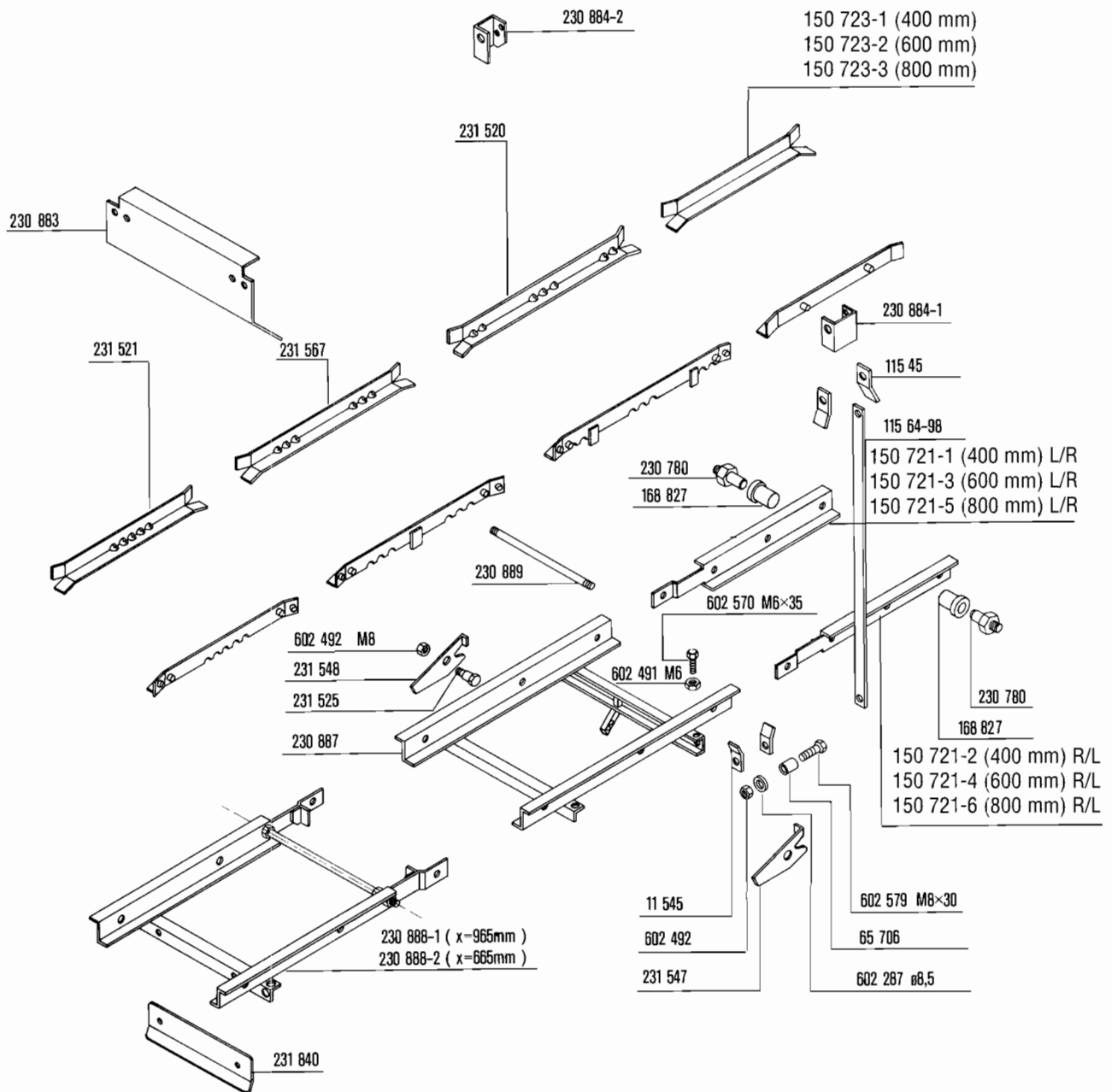
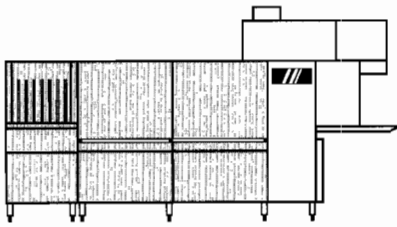


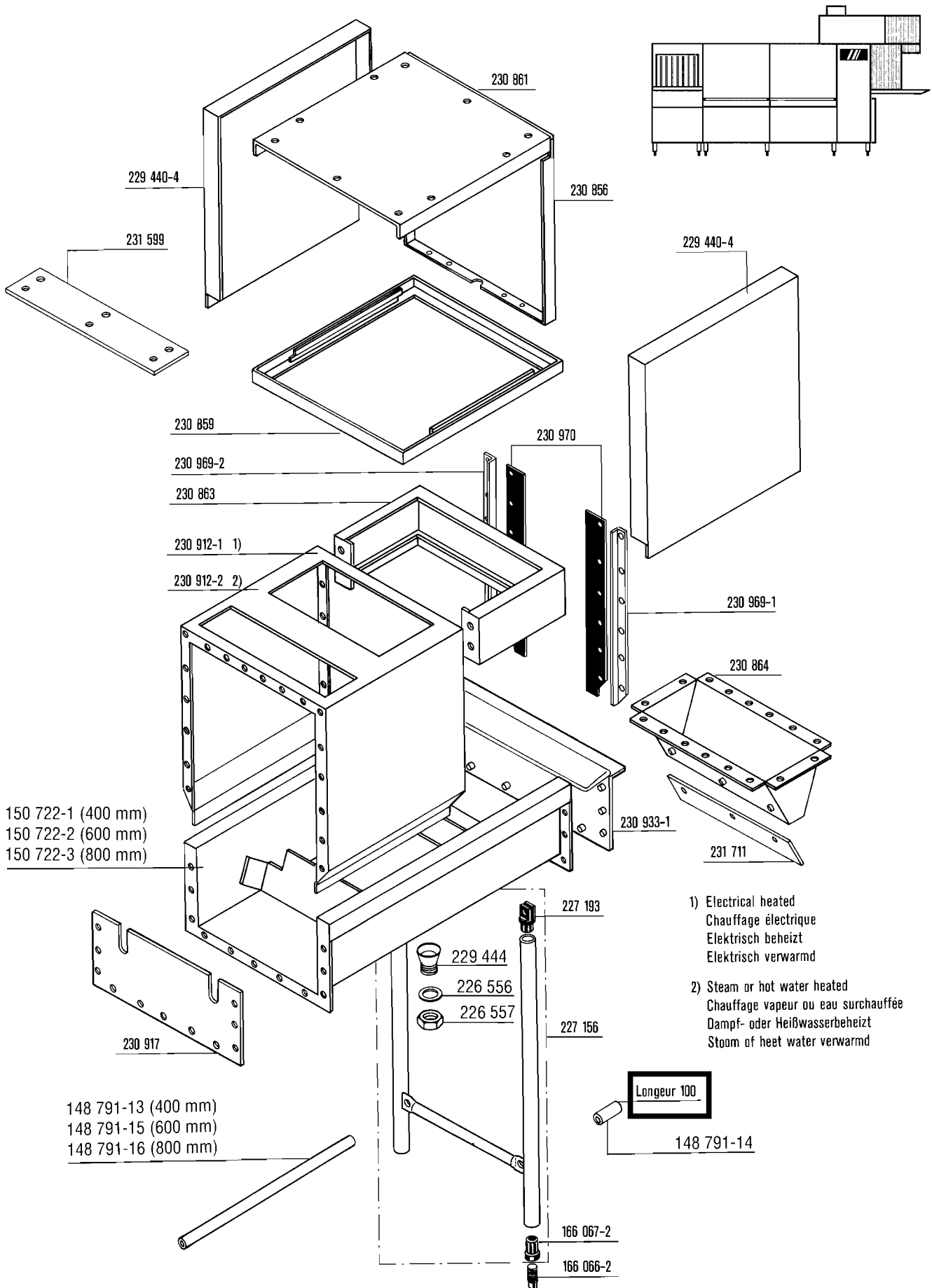


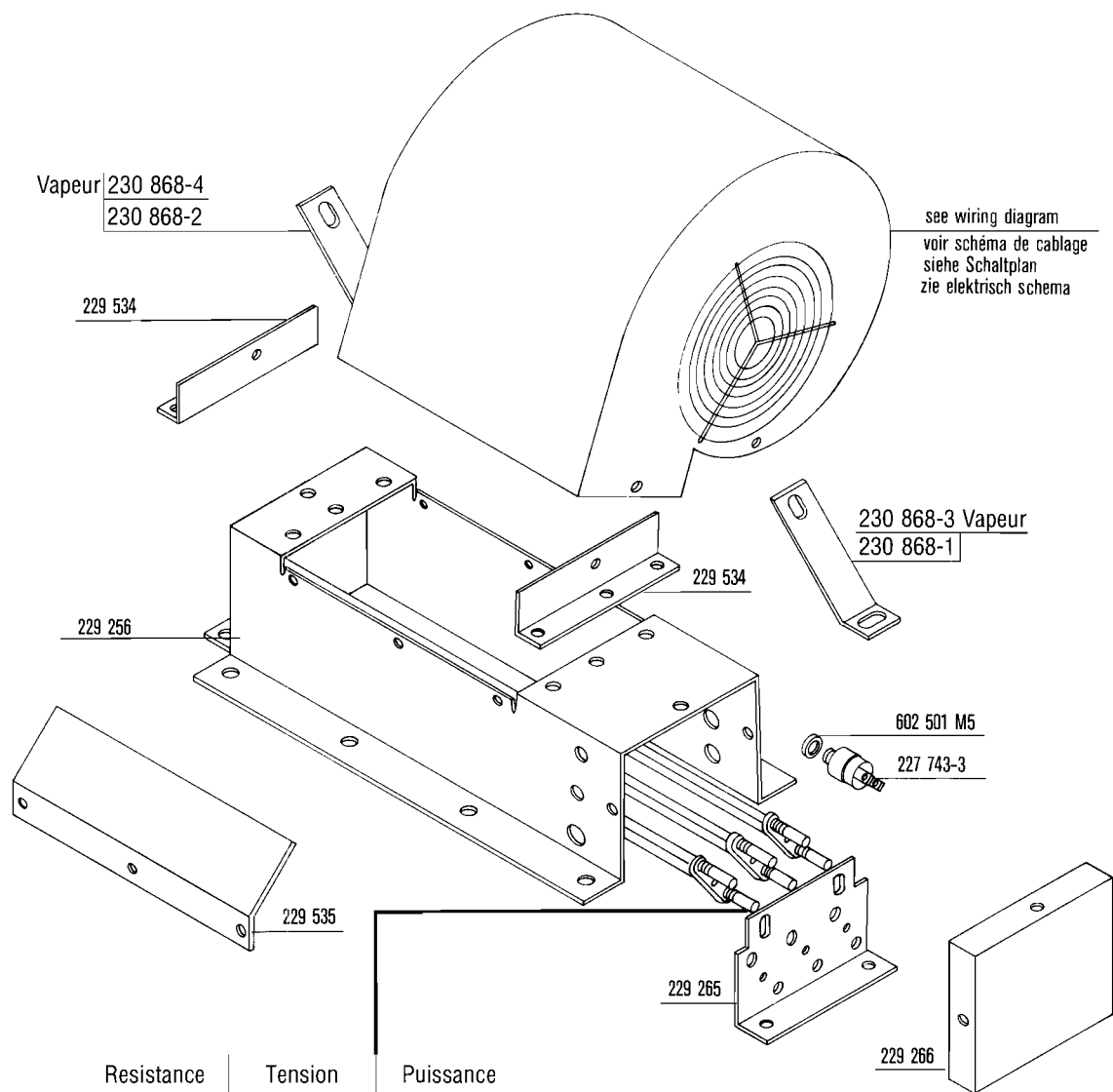
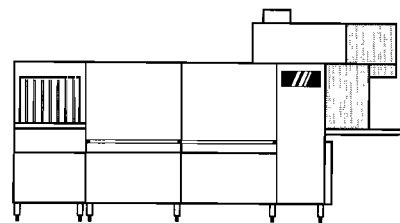
A			
C 5		C 6	
FRANCE EXPORT	RFA	FRANCE EXPORT	RFA
150 634	230 909 229 621-1	152 082 152 046-1 152 083	150 634











Resistance	Tension	Puissance
229 189-1	220 V	3000 W
229 189-2	240 V	
229 189-3	254 V	
229 189-4	220 V	2000 W
229 189-5	240 V	
229 189-6	254 V	
229 189-7	277 V	3000 W
229 189-8	220 V	1500 W
229 189-9	240 V	
229 189-10	254 V	

